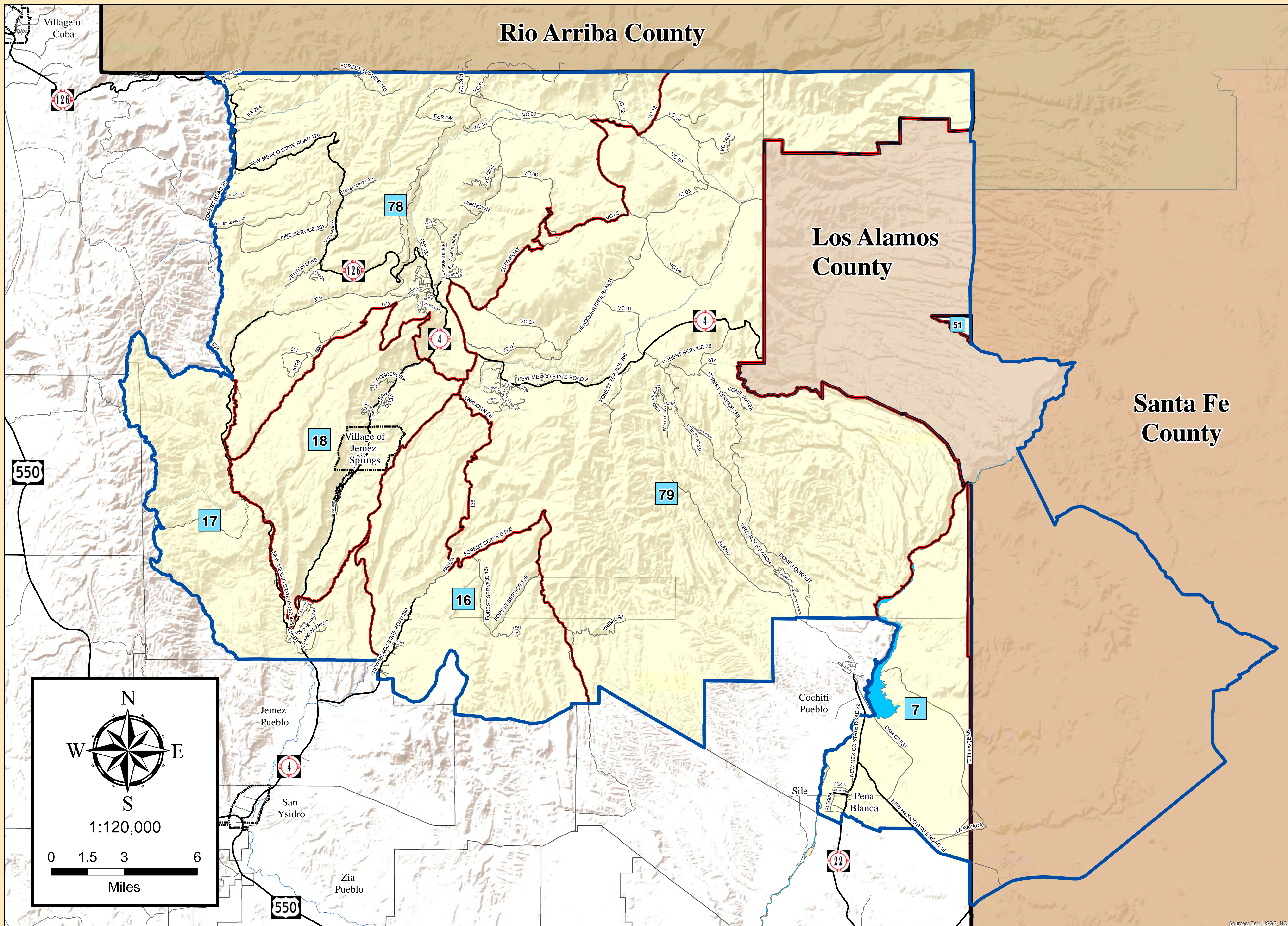




NM State House District 43 Precinct Map-Sandoval County, NM

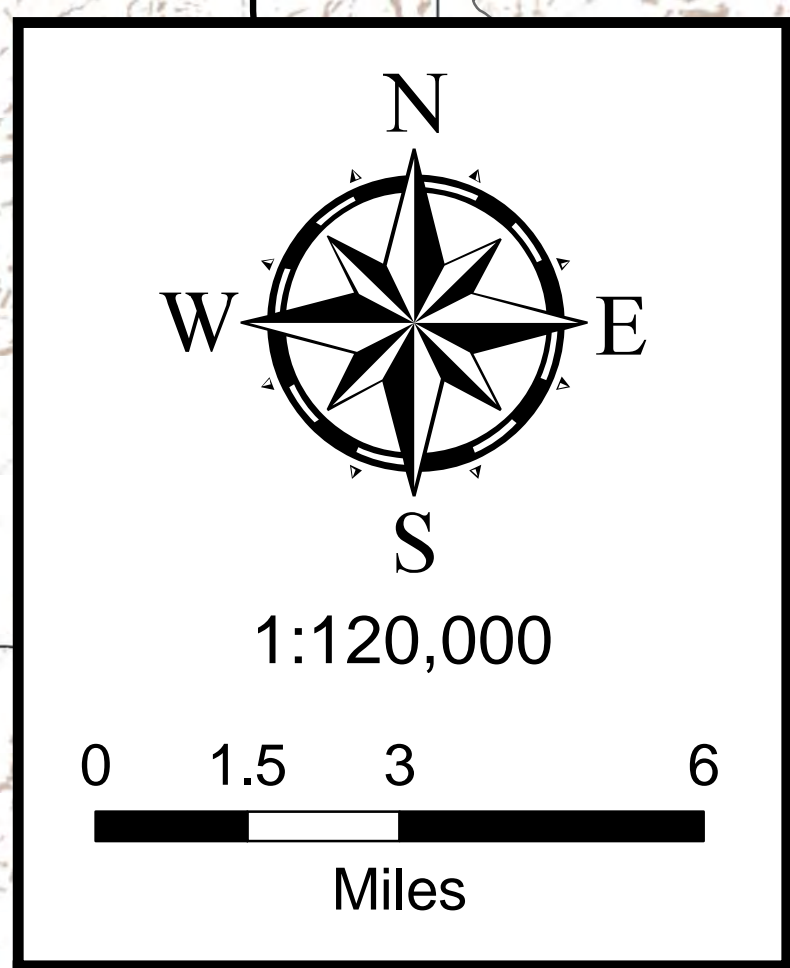
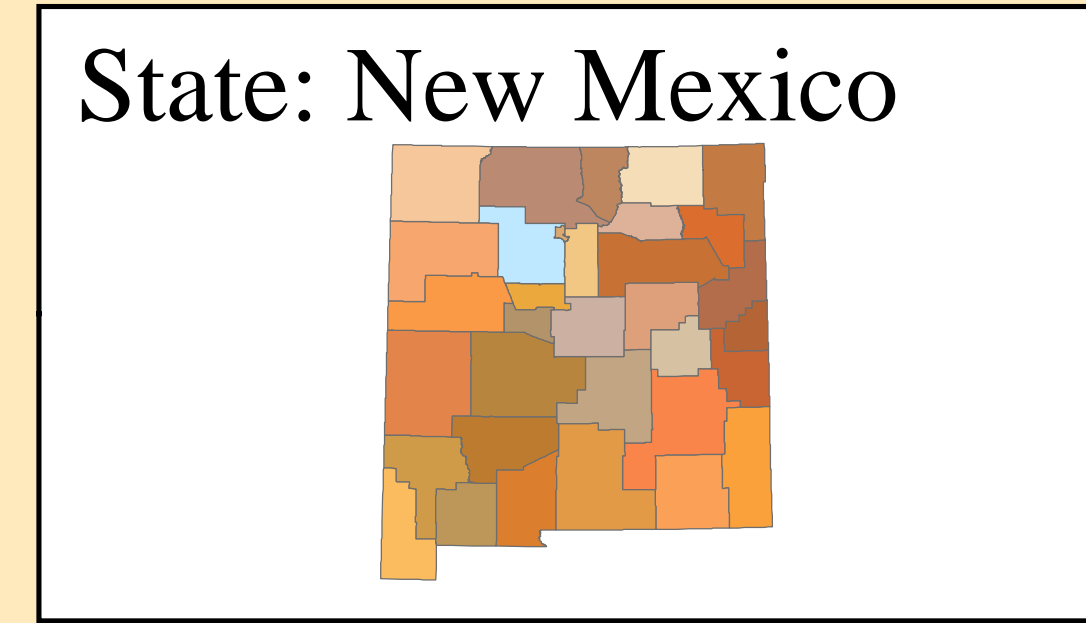
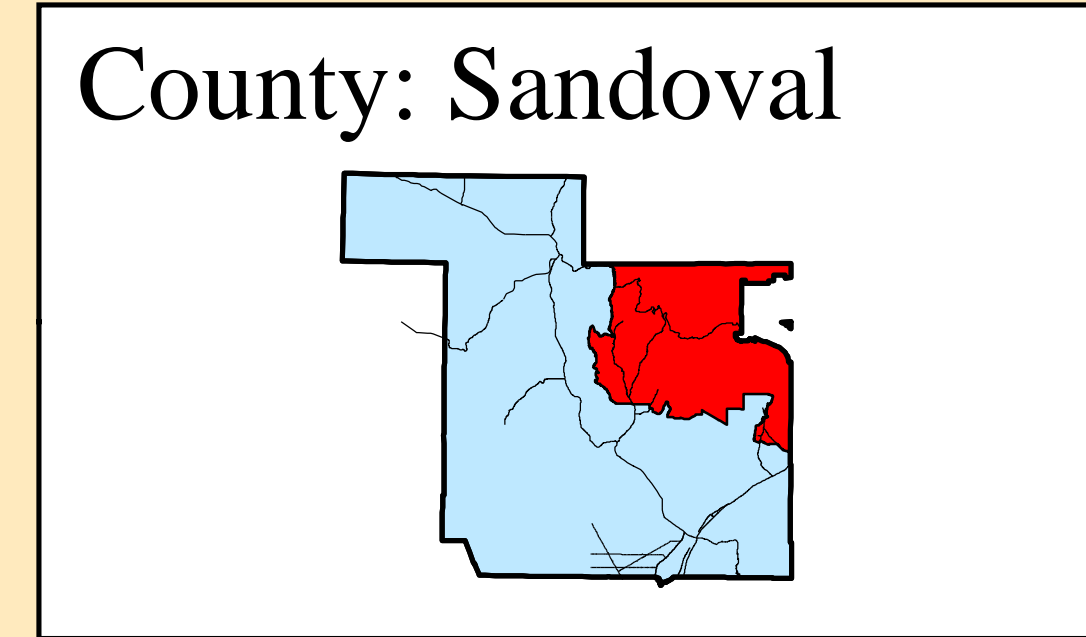
(2022)



Location:
 Village of Jemez Springs,
 Communities of Canon,
 Ponderosa, Seven Springs,
 Gilman, Pena Blanca

Legend

- NM House District 43 Boundary
- Precinct



**Disclaimer/
 Contact Information**

The information on this map is for reference purposes only. It is a representational map based on GIS data from the following sources:
 Research & Polling, Inc.
www.nmlegis.gov

Please contact the appropriate governmental entity(ies) for copies of applicable legal property documents and/or plats for the legal descriptions and boundaries. All information should be independently verified.

Map prepared by:
 Jared Massegee -GIS Section
 Sandoval County
 Planning and Zoning Division
 1500 Idalia RD Building D
 Bernalillo, New Mexico 87004

Created - February, 2022 Version 1.0