



# Sandoval County Commission Precinct Map - District 5

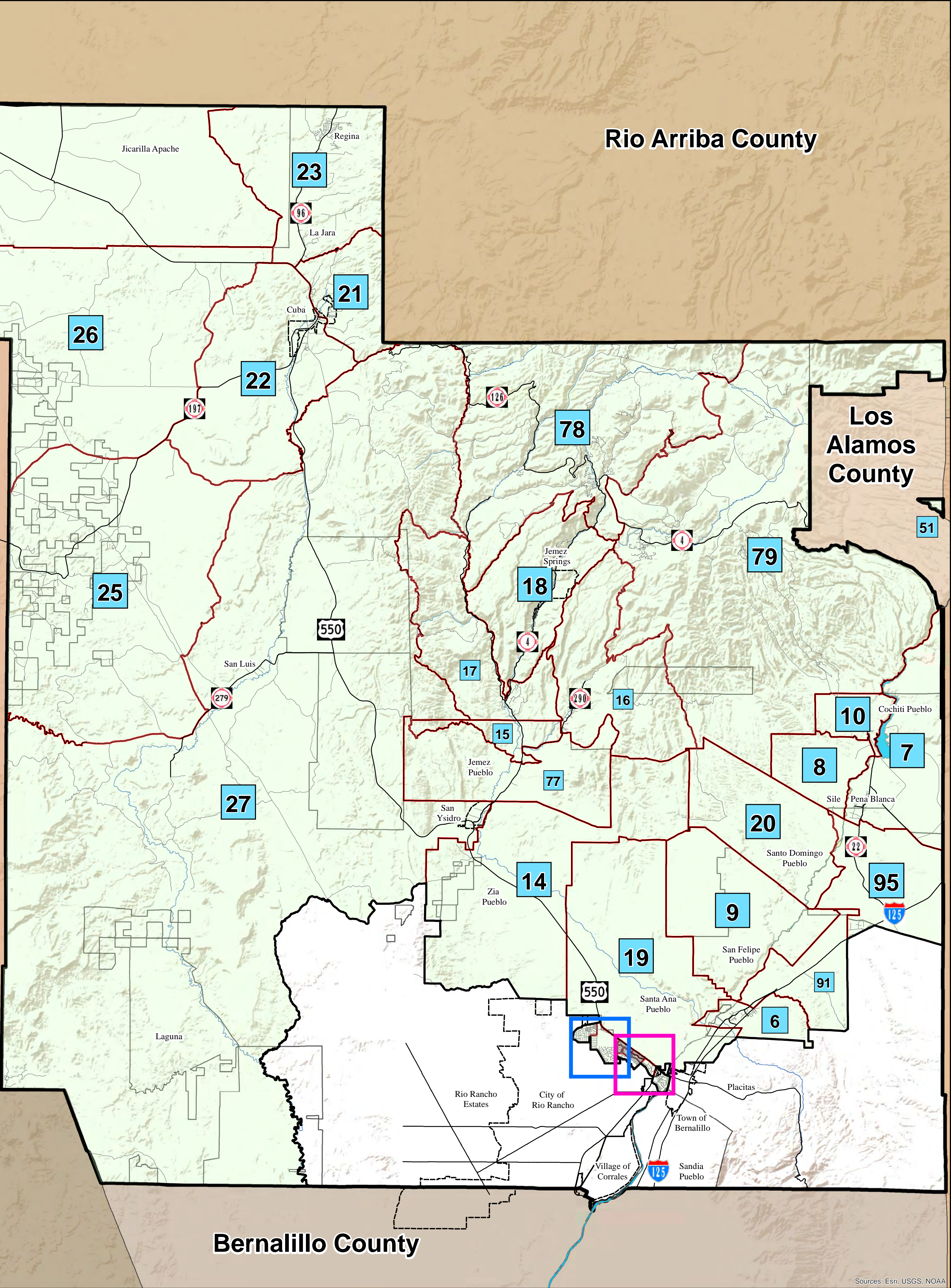
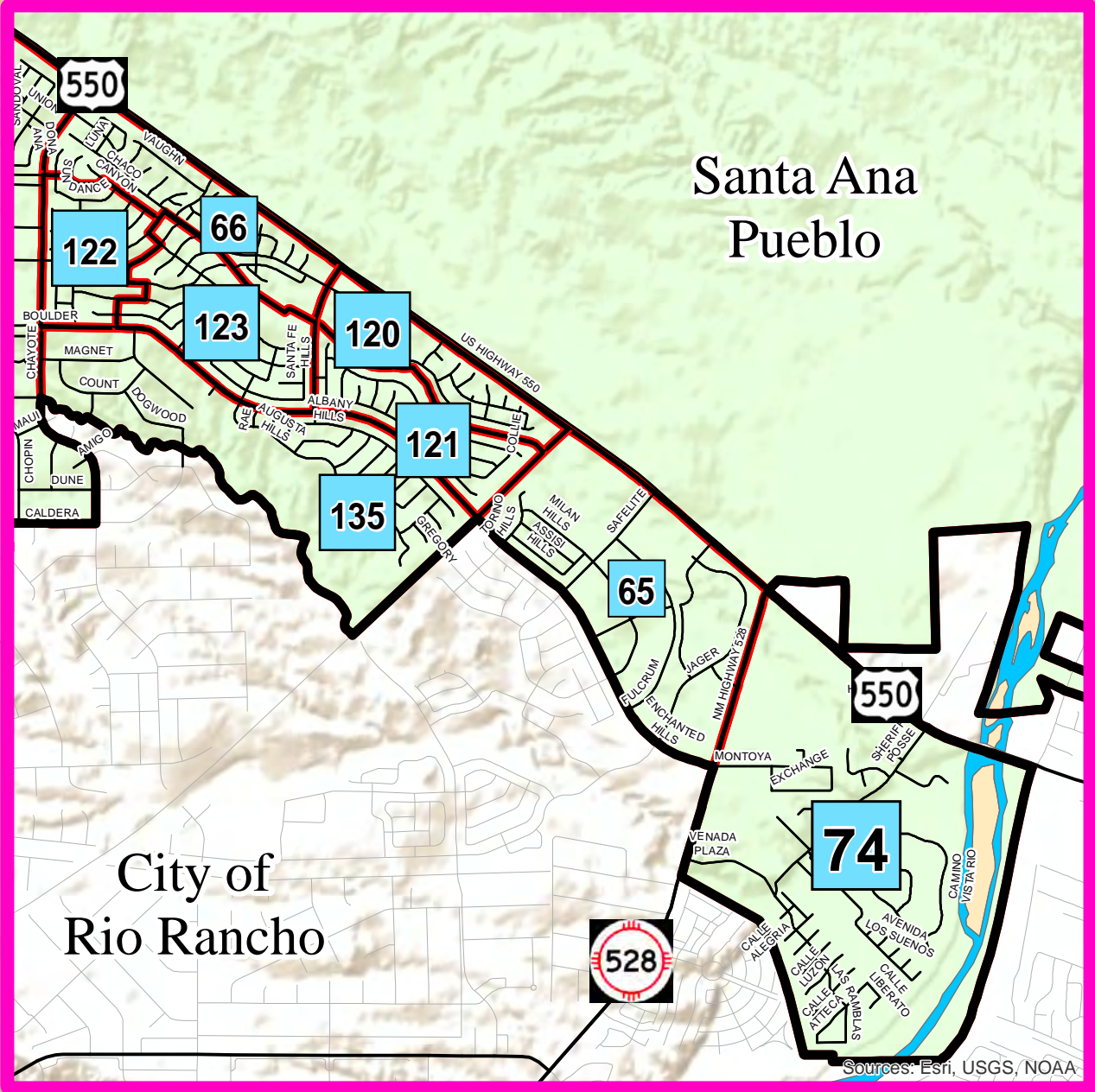
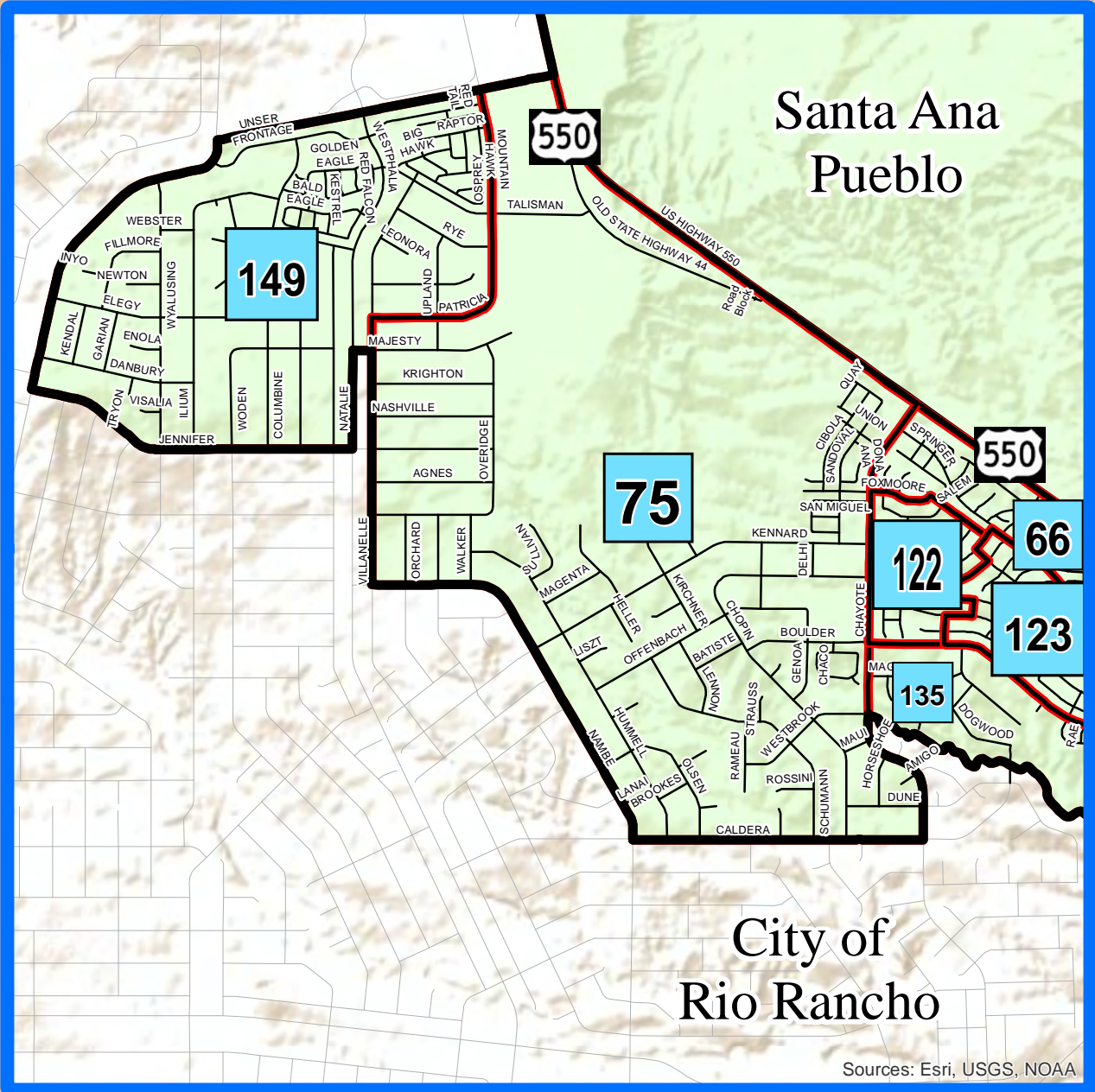
(2022)



## Boundary Description-Commission District 5

All of that portion of Sandoval County bounded and described as follows:

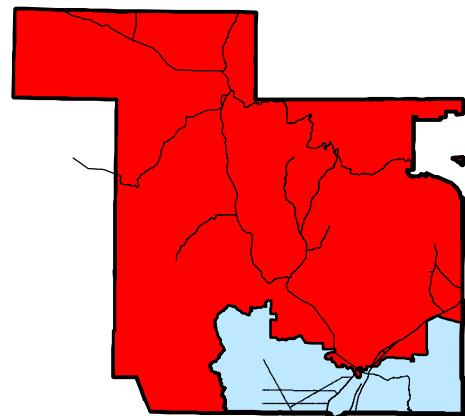
- Beginning at the point of intersection of the San Juan/Sandoval county line and the McKinley/Sandoval county line, and proceeding northerly along the San Juan/Sandoval county line to the Rio Arriba/Sandoval county line, and proceeding easterly along the Rio Arriba/Sandoval county line to the Los Alamos/Sandoval county line, and proceeding westerly along the Los Alamos/Sandoval county line to the Santa Fe/Sandoval county line, and proceeding southerly along the Santa Fe/Sandoval county line to the reservation line, and proceeding westerly along the reservation line to I-25, and proceeding westerly along I-25 to the reservation line, and proceeding southerly along the reservation line to the Placitas census designated place line, and proceeding southerly along the Placitas census designated place line to the reservation line, and proceeding southerly along the reservation line to the Placitas census designated place line, and proceeding westerly along the Placitas census designated place line to the reservation line, and proceeding westerly along the reservation line to the Algodones census designated place line, and proceeding westerly along the Algodones census designated place line to the Santa Ana Pueblo census designated place line, and proceeding southerly along the Santa Ana Pueblo census designated place line to the Placitas/Santa Ana Pueblo census designated place line, and proceeding westerly along the Placitas/Santa Ana Pueblo census designated place line to the Bernalillo/Santa Ana Pueblo town/census designated place line, and proceeding westerly along the Bernalillo/Santa Ana Pueblo town/census designated place line to the Santa Ana Pueblo census designated place line, and proceeding westerly along the Santa Ana Pueblo census designated place line to nonvisible boundary, and proceeding westerly along nonvisible boundary to the Santa Ana Pueblo census designated place line, and proceeding southerly along the Santa Ana Pueblo census designated place line to the reservation line, and proceeding westerly along the reservation line to the Bernalillo/Santa Ana Pueblo town/census designated place line, and proceeding westerly along the Bernalillo/Santa Ana Pueblo town/census designated place line to the reservation line, and proceeding westerly along the reservation line to the Bernalillo/Santa Ana Pueblo town/census designated place line, and proceeding easterly along the Bernalillo/Santa Ana Pueblo town/census designated place line to the reservation line, and proceeding southerly along the reservation line to the Bernalillo/Santa Ana Pueblo town/census designated place line, and proceeding westerly along the Bernalillo/Santa Ana Pueblo town/census designated place line to the Santa Ana Pueblo census designated place line, and proceeding northerly along the Santa Ana Pueblo census designated place line to the reservation line, and proceeding southerly along the reservation line to the Bernalillo town line, and proceeding westerly along the Bernalillo town line to the reservation line, and proceeding northerly along the reservation line to Tanaya Blvd, and proceeding southerly along Tanaya Blvd to Rio Rancho Blvd SE, and proceeding southerly along Rio Rancho Blvd SE to the Rio Rancho city line, and proceeding easterly along the Rio Rancho city line to the Bernalillo town line, and proceeding easterly along the Bernalillo town line to US Hwy 550, and proceeding easterly along US Hwy 550 to Bernalillo Riverside, and proceeding southerly along Bernalillo Riverside to Bernalillo Riverside Drn, and proceeding westerly along Bernalillo Riverside Drn to the Bernalillo town line, and proceeding westerly along the Bernalillo town line to the Rio Rancho/Bernalillo city/town line, and proceeding northerly along the Rio Rancho/Bernalillo city/town line to Arroyo Venada, and proceeding northerly along Arroyo Venada to Rio Rancho Blvd SE, and proceeding northerly along Rio Rancho Blvd SE to the Bernalillo/Rio Rancho town/city line, and proceeding westerly along the Bernalillo/Rio Rancho town/city line to Enchanted Hills Blvd NE, and proceeding westerly along Enchanted Hills Blvd NE to Pso del Volcan NE, and proceeding westerly along Pso del Volcan NE to stream/river, and proceeding westerly along stream/river to Chayote Rd NE, and proceeding southerly along Chayote Rd NE to Caldera Rd NE, and proceeding westerly along Caldera Rd NE to Nambé Rd NE, and proceeding northerly along Nambé Rd NE to Villanelle Rd, and proceeding northerly along Villanelle Rd to Villanelle Rd NE, and proceeding northerly along Villanelle Rd NE to Majesty Rd NE, and proceeding westerly along Majesty Rd NE to Westphalia Blvd NE, and proceeding southerly along Westphalia Blvd NE to Jennifer Rd NE, and proceeding northerly along Jennifer Rd NE to Unser Blvd NE, and proceeding northerly along Unser Blvd NE to the Rio Rancho city line, and proceeding easterly along the Rio Rancho city line to NW Loop Rd, and proceeding easterly along NW Loop Rd to the Rio Rancho city line, and proceeding northerly along the Rio Rancho city line to the reservation line, and proceeding westerly along the reservation line to unnamed Local road, and proceeding westerly along unnamed Local road to the reservation line, and proceeding westerly along the reservation line to Cabezon Rd, and proceeding westerly along Cabezon Rd to unnamed Local road, and proceeding westerly along unnamed Local road to BLM Rd 1115, and proceeding southerly along BLM Rd 1115 to unnamed Local road, and proceeding southerly along unnamed Local road to Arroyo la Jara, and proceeding westerly along Arroyo la Jara to nonvisible boundary, and proceeding southerly along nonvisible boundary to ridge line, and proceeding westerly along ridge line to Arroyo la Jara, and proceeding southerly along Arroyo la Jara to stream/river, and proceeding westerly along stream/river to Arroyo Cuervo, and proceeding southerly along Arroyo Cuervo to stream/river, and proceeding southerly along stream/river to Arroyo Cuervo, and proceeding southerly along Arroyo Cuervo to Arroyo Cuervo, and proceeding westerly along Arroyo Cuervo to Rio Puerco, and proceeding easterly along Rio Puerco to the Bernalillo/Sandoval county line, and proceeding westerly along the Bernalillo/Sandoval county line to the Cibola/Sandoval county line, and proceeding northerly along the Cibola/Sandoval county line to the McKinley/Sandoval county line, and proceeding northerly along the McKinley/Sandoval county line to the point of beginning.
- As well as beginning at the point of intersection of the Los Alamos/Sandoval county line and the Santa Fe/Sandoval county line, and proceeding easterly along the Los Alamos/Sandoval county line to the Santa Fe/Sandoval county line, and proceeding southerly along the Santa Fe/Sandoval county line to the point of beginning.



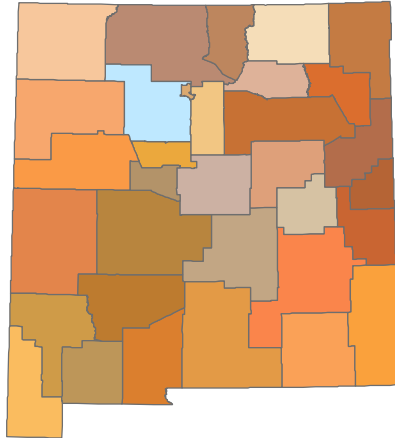
Location:  
Sandoval County, NM

Precinct Index:  
6, 7, 8, 9, 10, 14, 15, 16, 17, 18, 19, 20, 21, 22, 23, 24, 25, 26, 27, 51, 65, 66, 74, 75, 77, 78, 79, 91, 95, 120, 121, 122, 123, 135 & 149

County: Sandoval



State: New Mexico



## Disclaimer/ Contact Information

The information on this map is for reference purposes only. It is a representational map based on GIS data from the following sources:  
New Mexico Demographic Research  
(Plan D was approved by County Commission on December 9th, 2021)  
Research & Polling, Inc.

Please contact the appropriate governmental entity(ies) for copies of applicable legal property documents and/or plats for the legal descriptions and boundaries. All information should be independently verified.

Map prepared by:  
Jared Massegee-GIS Section  
Sandoval County  
Planning and Zoning Division  
1500 Italia RD Building D  
Bernalillo, New Mexico 87004

Created - February, 2022

Version 2.0