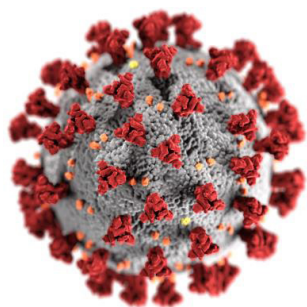




# Sandoval County Now E-newsletter

Volume III November 2020



## Coronavirus (COVID-19) Sandoval County Information and Resources [Click here for website](#)

### COVID-19 Public Health Requirements

- Foremost, please stay home if you are sick. Period.
- Masks are mandatory in public, non-compliance can result in a \$100 fine
- Mandatory 14-day isolation period for all out-of-state travel and/or visitors
- Practice social distancing -- be aware of your surroundings and others near you
- Adhere to the six-foot rule and stay at home except as needed for grocery shopping, medical assistance and exercise
- Limit group contact to five or fewer people
- Wash your hands often with soap and water for at least 20 seconds
- Clean and disinfect frequently touched objects and surfaces
- Avoid touching your eyes, nose and mouth
- Cover your cough or sneeze with a tissue, then throw the tissue in the trash

#### New Mexico Department of Health:

- New Mexicans with COVID-19 related questions should call the coronavirus hotline at 855-600-3453
- Non-COVID-19 related questions or concerns, call 833-551-0518
- NMDOH COVID-19 Public Dashboard -- the data dashboard includes county-by-county breakdowns of positive cases by age, gender and ethnicity.

Up-to-date information about state mandates and information: [www.newmexico.gov](http://www.newmexico.gov).

Information and resources from the CDC regarding coronavirus COVID-19: [www.cdc.gov](http://www.cdc.gov).

CDC fact sheets to read and/or download, <https://www.cdc.gov/coronavirus/2019-ncov/communication/factsheets.html>

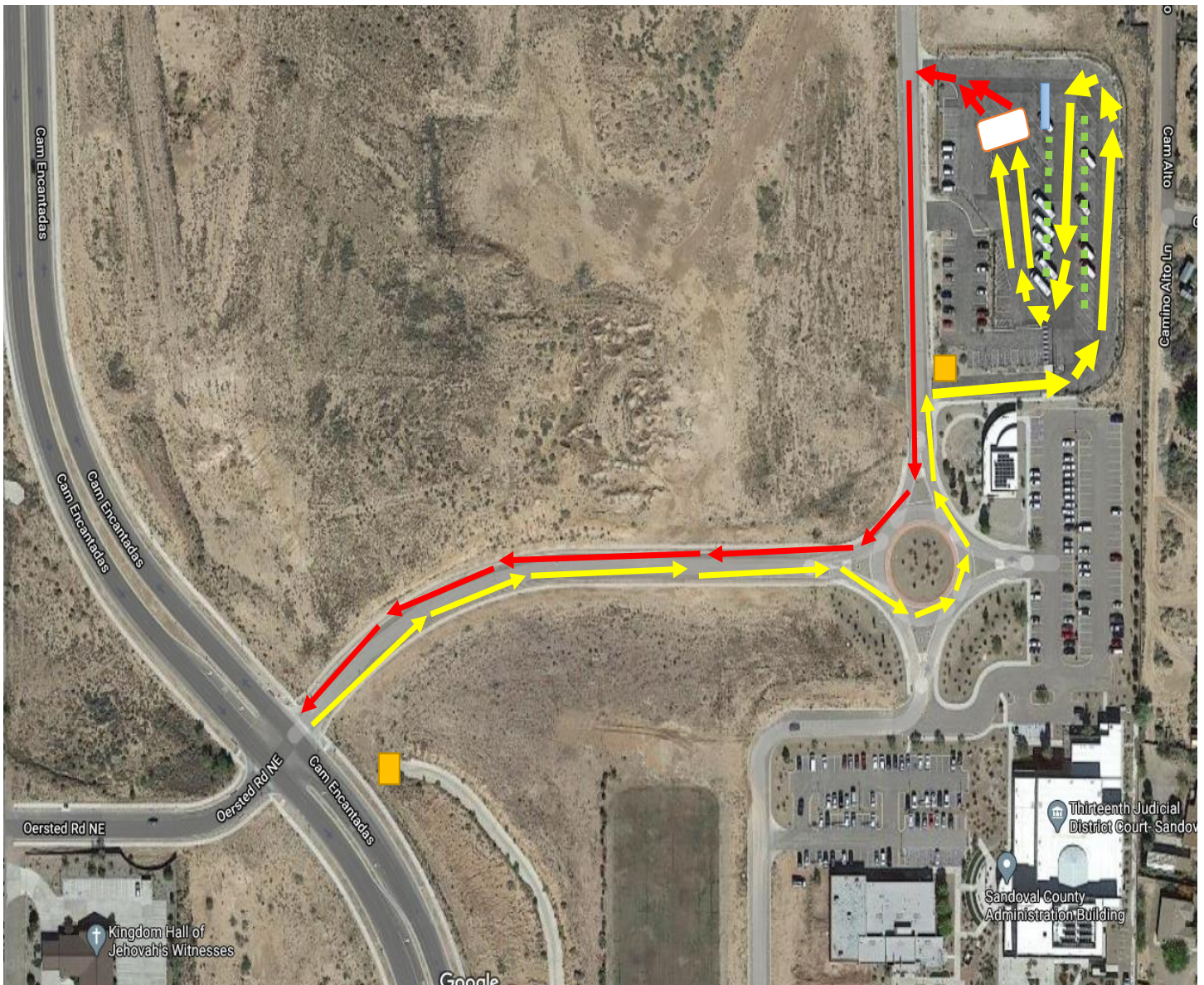
COVID-19 Testing at Sandoval County EOC: 1500 Idalia Rd. Building C Bernalillo, NM

**Tuesdays, Wednesdays and Thursdays: 9 a.m. to 11 a.m.**

- Go to [cvtestingreg.nmhealth.org](https://cvtestingreg.nmhealth.org) or scan QR Code
- Fill out all required (\*) fields
- You must enter your cell phone # or email address
- Select testing date: ##/##/####
- Where would you like to be tested: **Sandoval County**
- Location you will be visiting: **Sandoval County EOC**
- Please be prepared to present your test confirmation ID



Here is a map for residents getting tested for COVID-19 to use at the Sandoval County Administration building





# Sandoval County Office and Department Availability



- **Assessor's Office**

Open Monday-Friday 8 a.m. - 5 p.m. Closed for lunch from 12-1pm. Appointments are recommended.

- **Bureau of Elections**

Open with limited staff.

- **County Clerk's Office**

Open Monday-Friday 8 a.m. - 5 p.m. Appointments are recommended due to limited staff.

- **Human Resources**

Open Monday-Friday 8 a.m. - 5 p.m. Due to limited staff, please call or email with inquiries.

- **Planning and Zoning**

Open Monday-Friday 8 a.m. - 5 p.m. Closed between 12-1pm. Submittals can be processed electronically or dropped off at window. Individual meetings must be approved by Director.

- **Probate Court**

Monday, Wednesday, Friday from 8:00 a.m. to 4:30 p.m. Tuesday and Thursday from 12:30 - 4:30 p.m.

- **Treasurer's Office**

Open Monday - Friday 8:00 a.m. - 5:00 p.m.

# 2020



## County Holiday / Observances:

- January 1 - New Year's Day
- January 20 - Martin Luther King Day
- May 25 - Memorial Day
- July 3 - Independence Day
- September 7 - Labor Day
- November 11 - Veterans Day
- November 26-27 - Thanksgiving Day
- December 24 & 25 - Christmas

## To be taken within the Calendar year.

- (2) 8 hour Administrative Leave Days

Investment Committee

Start time of 4:00 p.m.

Board of Finance

Start time of 5:00 p.m.

Sandoval County Commission Meetings

Start time of 6:00 p.m.

Planning & Zoning Commission

Start time of 4:30 p.m.

County Pay Days

All meetings held in the County Commission

Chambers located at:

1500 Idalia Road, Building D - 3<sup>rd</sup> Floor

Bernalillo, NM 87004

January						
S	M	T	W	T	F	S
			1	2	3	4
5	6	7	8	9	10	11
12	13	14	15	16	17	18
19	20	21	22	23	24	25
26	27	28	29	30	31	

February						
S	M	T	W	T	F	S
						1
2	3	4	5	6	7	8
9	10	11	12	13	14	15
16	17	18	19	20	21	22
23	24	25	26	27	28	29

March						
S	M	T	W	T	F	S
1	2	3	4	5	6	7
8	9	10	11	12	13	14
15	16	17	18	19	20	21
22	23	24	25	26	27	28
29	30	31				

April						
S	M	T	W	T	F	S
			1	2	3	4
5	6	7	8	9	10	11
12	13	14	15	16	17	18
19	20	21	22	23	24	25
26	27	28	29	30		

May						
S	M	T	W	T	F	S
					1	2
3	4	5	6	7	8	9
10	11	12	13	14	15	16
17	18	19	20	21	22	23
24	25	26	27	28	29	30
31						

June						
S	M	T	W	T	F	S
	1	2	3	4	5	6
7	8	9	10	11	12	13
14	15	16	17	18	19	20
21	22	23	24	25	26	27
28	29	30				

July						
S	M	T	W	T	F	S
			1	2	3	4
5	6	7	8	9	10	11
12	13	14	15	16	17	18
19	20	21	22	23	24	25
26	27	28	29	30	31	

August						
S	M	T	W	T	F	S
						1
2	3	4	5	6	7	8
9	10	11	12	13	14	15
16	17	18	19	20	21	22
23	24	25	26	27	28	29
30	31					

September						
S	M	T	W	T	F	S
		1	2	3	4	5
6	7	8	9	10	11	12
13	14	15	16	17	18	19
20	21	22	23	24	25	26
27	28	29	30			

October						
S	M	T	W	T	F	S
				1	2	3
4	5	6	7	8	9	10
11	12	13	14	15	16	17
18	19	20	21	22	23	24
25	26	27	28	29	30	31

November						
S	M	T	W	T	F	S
1	2	3	4	5	6	7
8	9	10	11	12	13	14
15	16	17	18	19	20	21
22	23	24	25	26	27	28
29	30					

December						
S	M	T	W	T	F	S
		1	2	3	4	5
6	7	8	9	10	11	12
13	14	15	16	17	18	19
20	21	22	23	24	25	26
27	28	29	30	31		



Contact: Stephen Montoya PIO  
Office: 505-867-7640, Cell: 505-382-2753  
[spmontoya@sandovalcountynm.gov](mailto:spmontoya@sandovalcountynm.gov)

*For immediate release,*  
September 3, 2020

### **Sandoval County receives allocation of funds to help small businesses**

**Sandoval County, NM** – The New Mexico Department of Finance and the Governor's Office have released \$965k in Small Business Continuity Grant funds to Sandoval County. These emergency relief funds have been set up to support the small businesses hit the hardest by the COVID-19 pandemic. Funds are available as part of the Coronavirus Aid, Relief, and Economic Security (CARES) Act federal stimulus package.

These funds can be offered as grants to their local businesses. Grant funds can only be used by pandemic-impacted businesses for eligible expenses that fall into two categories: Business Continuity (such as non-owner payroll; rent or mortgage; insurance; utilities; marketing) and Business Redesign (installing Plexiglas barriers, temporary structures, and physical space reconfiguration to mitigate the spread of the virus; purchases of PPE and web conferencing technology).

The County program is intended to help reimburse the significant, temporary loss of revenue to these qualified businesses during this pandemic, and to assist businesses in retaining and paying employees. Sandoval County has determined these payments are necessary expenditures due to the public health emergency.

The program will offer one-time grants up to \$20,000 to qualifying small businesses and non-profits to cover costs such as non-owner/employee wages, vendor bills, and rent caused by required closures. Grants will first be prioritized to qualifying businesses within the unincorporated areas of Sandoval County and towns that did not receive Small Business Continuity Grant funding. However, any qualifying business or non-profits physically located within Sandoval County are encouraged to apply. Funds can only be used to reimburse the costs of business interruption caused by required closures provided those costs are not paid by insurance or by another federal, state, or local program.

Regardless of whether an organization is eligible for this program, it may still qualify for other existing funding received from a separate municipality within the county. [Visit](#) the Sandoval County Economic Development webpage for a list of other federal and state programs assisting organizations impacted by the COVID-19 pandemic.

### **Eligibility Overview**

- Maximum of \$20,000 for qualifying small organizations with a physical location in Sandoval County (2-5 minimum full-time employees, or equivalent part-time employees, including the owner).
- Priority will be given to organizations that did not receive Economic Injury Disaster Loan (EIDL) or Paycheck Protection Program (PPP) funds from the Small Business Administration's (SBA), or small business assistance funds from the State of New Mexico or City of Albuquerque.
- Restaurants, bars, short-term lodging, and other non-essential organizations impacted by the local or state safer-at-home orders are eligible.
- Sandoval County residents who engage in 1099 (consultants/contract employment) are eligible.
- Funds must be used to reimburse costs incurred as a result of required closures, provided those costs are not paid by insurance or by any other federal, state, or local program. Such costs may include employee wages, vendors, rent, or other organization expenses.
- A physical place of business located within the boundaries of Sandoval County, New Mexico is required, including for mobile vendors.
- Organizations must receive no more than \$3 million in taxable receipts [per annum].

The application process will open on Tuesday, September 8, 2020, and close on October 30, 2020, or sooner if funds are exhausted. Grantees will have to provide three reports on the use of Sandoval County CARES Small Business grant funds at 90, 180, and 365 days.

“The work it takes to run a small business is a story of hard-working people,” said Dora Dominguez, Director of Sandoval County Economic Development. “The opportunity to provide a source of emergency relief in the wake of a pandemic is a much-appreciated honor. Small business owners are the backbone of our nation and local economies. As community leaders, the task remained from the beginning to identify all resources available understanding hard-working people stand up businesses. As leaders, our role is not to just build businesses but to support and build people; the strength of whom then create businesses that in turn support job growth.”

The county application portal will go live beginning, September 8, 2020. Applications will be accepted through October 30, 2020, with all funds to be allocated no later than December 30, 2020. “We look forward to working with our local municipalities to ensure the funds are administered and all program deadlines and requirements are met.”

Sandoval County was one of four local governments in the County to apply for these funds. The Town of Bernalillo received \$1,128,900; Village of Corrales received \$255,000, Village of Cuba received \$32,902, City of Rio Rancho received \$465,733 and Sandoval County received \$965,000.

**If interested in applying for this grant program please go to: [businessgrant@sandovalcountynm.gov](mailto:businessgrant@sandovalcountynm.gov) to ask for a copy of the application form.**

###

# COVID-19 Testing in Sandoval County

Testing is available for anyone with or without symptoms

**Tuesdays and Thursdays 9:00-11:00 am**

## How?

**Registration is required:**  
**[cvtestreg.nmhealth.org](https://cvtestreg.nmhealth.org)**

- Fill out all required (\*) fields
- Enter email to get your confirmation
- Select testing date: enter date
- Where would you like to be tested:

**Sandoval County**

- Which location will you be visiting:  
**Sandoval County EOC**
- Please be prepared to present your test confirmation ID at testing site

## Where?

**Sandoval County EOC**  
1500 Idalia Rd Building C  
Bernalillo, NM  
Turn Right onto Oersted Rd  
off Cam Encantadas and  
follow testing signs

**Need help registering?**

Call

(505) 867-2291  
ext 1709 or 1712

**Registration is required  
prior to arriving.**



NEW MEXICO  
DEPARTMENT OF  
**HEALTH**



# COVERAGE FOR THE FAMILY

## HEALTHCARE ENROLLMENT WITH SANDOVAL COUNTY COMMUNITY HEALTH PROGRAM

[Call us to enroll!](#)

**MEDICAID**, SNAP,  
LIHEAP, Cash  
Assistance

---

Medicare Savings  
Plans

---

Healthcare  
Assistance Program

---

CALL US AT:



SANDOVAL  
COUNTY  
HEALTH  
COMMONS

1500 Idalia Road, Bldg. B  
Bernalillo, NM 87004  
Monday-Friday 8am-5pm

Call us at: (505) 867-2291  
Ext.1735, 1720

**SE HABLA  
ESPAÑOL.**

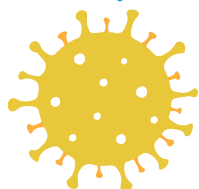


# TALK

COVID  
Crisis Counseling

Call Now  
505-954-1057  
It's Free & Anonymous

Step 1



Concerned

Step 2



Feeling  
Anxious &  
Overwhelmed

Step 3



Call Us  
& Talk

Step 4



Feel Better

If you or someone you know  
is experiencing overwhelming anxiety or  
grief, reach out to talk to someone  
free and anonymous at  
505-954-1057

**Help is available.**

You are not alone.  
Reach out anytime & anywhere.

**Free and anonymous talk counseling.**

Call 505-954-1057



**TALK:** COVID Crisis Counseling



HUMAN SERVICES  
DEPARTMENT

Behavioral Health Services Division  
New Mexico Crisis and Access Line

# SANDOVAL COUNTY

**Days Offered:**  
~~March 14th~~  
~~May 16th~~  
**September 5th**  
**November 21st**



**Free Hours**  
**8:00am-12:00pm**

## Free Landfill Days

**The Sandoval County Landfill in  
conjunction with the Town of Bernalillo**

*(Keep Bernalillo Beautiful)*

**and the City of Rio Rancho**

*(Keep Rio Rancho Beautiful)*

**will be offering 4 FREE Half Day Landfill  
Days for Sandoval County Residents**



**Sandoval County Landfill**

**2708 Iris NE**

**(505) 867-0816**



## *Off the beaten path...*



### THREE REMOTE SANDOVAL COUNTY TREKS

Though these trailheads are off regularly maintained roads, they are not paved. Conditions of roads can change at any time due to weather. Drivers should avoid dirt roads during rain or snow. Drivers should be cautious of wash-out following rain or snow melt.

Camping in the Wilderness is a rewarding experience, but often there are no water sources. Visitors must carry all the water they will need for the duration of the trip.

**Perea Nature Trail**– From Bernalillo, travel about 20 miles north on US 550, cross the Rio Salado bridge and turn left (west) on the paved access road just before the village of San Ysidro. A brown state highway recreation sign is posted on US 550 at the turnoff.

**White Ridge bike trails**-Traveling northwest toward Cuba on US 550 from Bernalillo, the drive is approximately 20 miles. Before San Ysidro (about two miles), turn left onto Cabezon Road (County Road 906) at the intersection of Cabezon Road and US 550. Follow the left fork. Travel 4.4 miles to the gravel parking lot.

**Seismosaurus Trailhead/Ojito Wilderness** – From Bernalillo, travel on U.S. 550 about 21 miles (about 2 miles before San Ysidro) turning left onto Cabezon Road (County Road 906). Follow the left fork approximately 9 1/4 miles to an Ojito Wilderness sign. Continue almost 3/4 mile to parking area on the left. A trail leads north, across the road and through a fence, into the Wilderness.

**Hoodoo Trailhead/Ojito Wilderness**– From Bernalillo, travel on U.S. 550 about 21 miles (about 2 miles before San Ysidro) turning left onto Cabezon Road (County Road 906). Follow the left fork approximately 9 1/4 miles to an Ojito Wilderness sign. Continue almost 3/4 mile to a developed parking area on the left side of the road. From the parking area, walk back about 400 feet to the east where a trail leads north into the Wilderness on the opposite side of the road.

**San Pedro Parks Wilderness area – Palomas Trailhead**- NM SH 126 to FR 70 to Trailhead – GET DIRECTIONS

**Sandia Crest via Placitas and HWY 165**– route takes you past Sandia Man Cave and the drive contains stunning vistas – GET DIRECTIONS

**Abiquiu Dam Lake**-Outside of Sandoval but does have lake access. Verified open for day use only but -NO boating-as of 5.19.20. CHECK LAKE STATUS