

PARTS LIST				
ITEM	QTY	PART NUMBER	DESCRIPTION	COMMENTS
1	1	0869-GA2		
1	2	0869-E1	PLATE SETTLER FRAME W/PLATES (NW LOCATION)	304L SS
2	2	0869-E2	PLATE SETTLER FRAME W/PLATES (NE LOCATION)	304L SS
3	6	0869-E3	PLATE SETTLER FRAME W/PLATES (W MIDDLE LOCATION)	304L SS
4	6	0869-E4	PLATE SETTLER FRAME W/PLATES (E MIDDLE LOCATION)	304L SS
5	2	0869-E5	PLATE SETTLER FRAME W/PLATES (SW LOCATION)	304L SS
6	2	0869-E6	PLATE SETTLER FRAME W/PLATES (SE LOCATION)	304L SS
7	20	0869-p6	PL. 14 GA. X 4" X 12"	304L SS
8	2	0869-E7	14 GA. X 12" X 12" OUTER TROUGH ASSEMBLY (NORTH)	304 SS/316 SS
9	416	ANSI B18.22.1 - 1/2 - wide - Type A	Plain Washer (Inch) Type A and B	304 SS
10	208	ANSI/ASME B18.2.1 - 1/2-13 UNC	Hex Bolt - UNC (Regular Thread - Inch)	304 SS
11	208	ANSI B18.2.2 - 1/2 - 13	Hex Nuts (Inch Series) Hex Nut	304 SS
12	8	0869-E8	14 GA. X 13" X 20" INNER TROUGH ASSEMBLY	304L SS/316 SS
13	2	0869-E9	14 GA. X 12" X 12" OUTER TROUGH ASSEMBLY (SOUTH)	304L SS/316 SS
14	80	.625 X 10 CHEM ANCHOR	5/8" X 10" CHEM. ANCHOR W/LW & NUT	304 SS
15	8	0869-M10	L3" X 3" X 1/4" TROUGH SUPPORT	304L SS
16	8	0869-M11	L3" X 3" X 1/4" TROUGH SUPPORT	304L SS
17	4	0869-F6/F7	L3" X 3" X 1/4" X 312"	304L SS

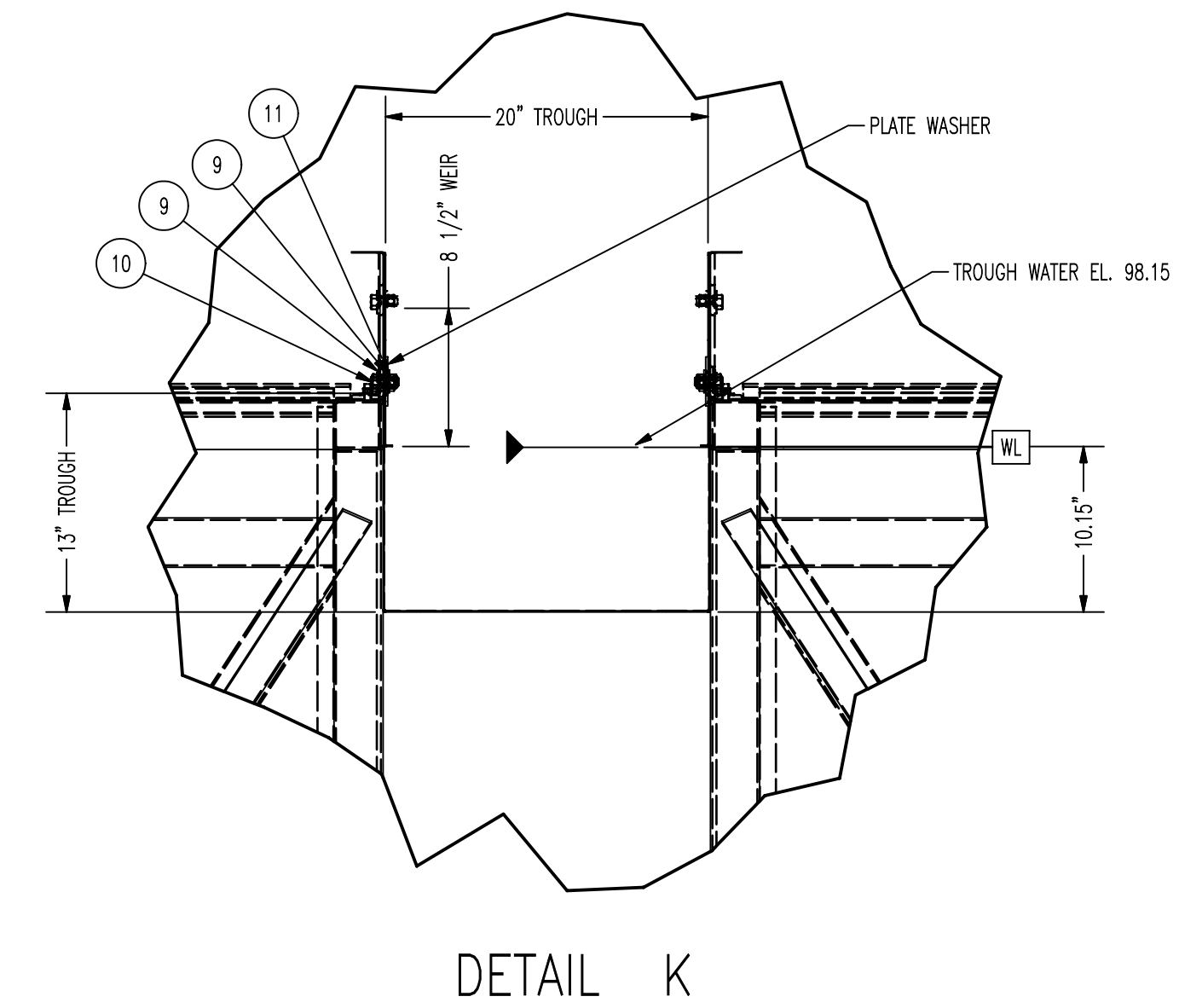
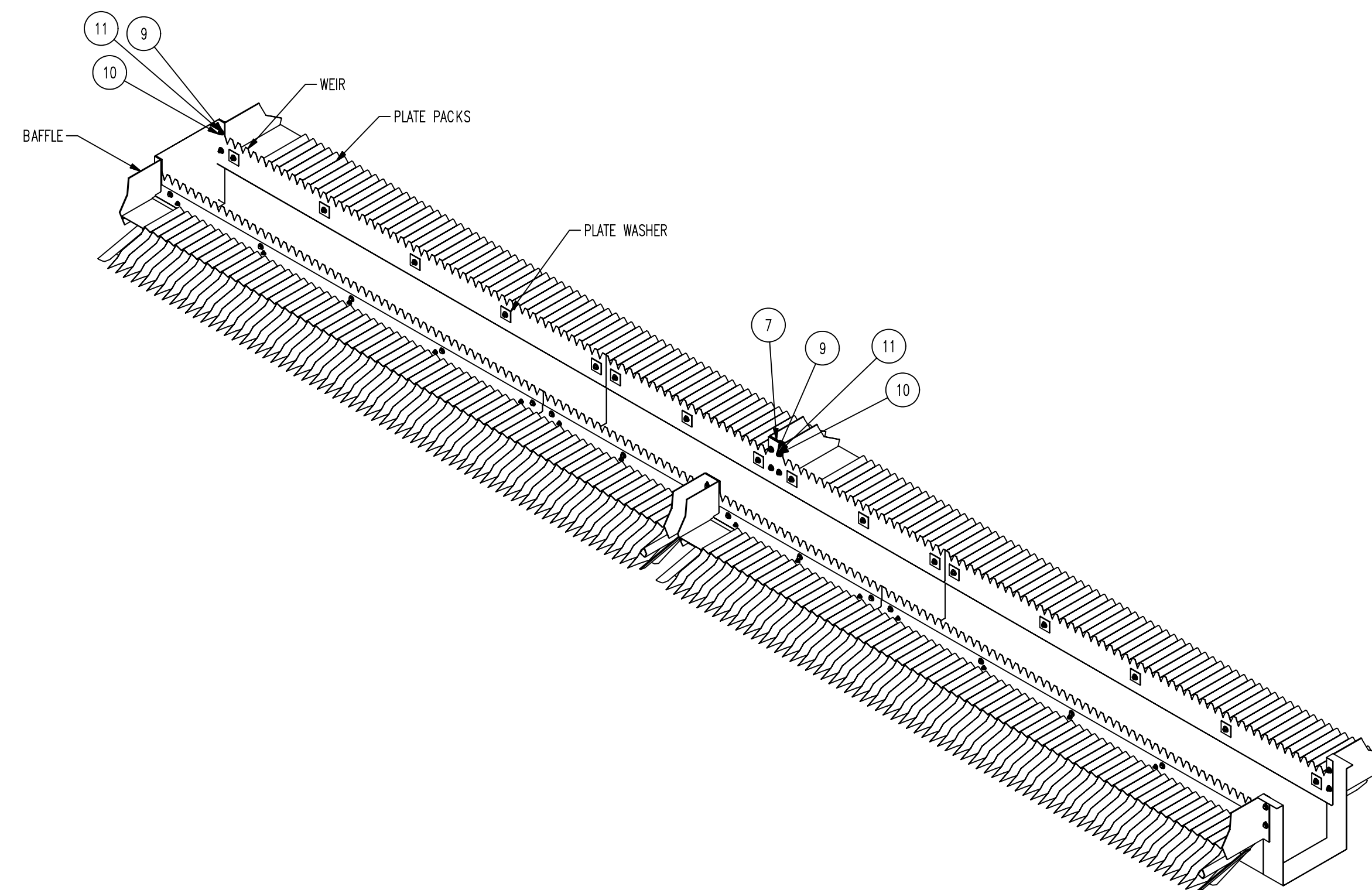
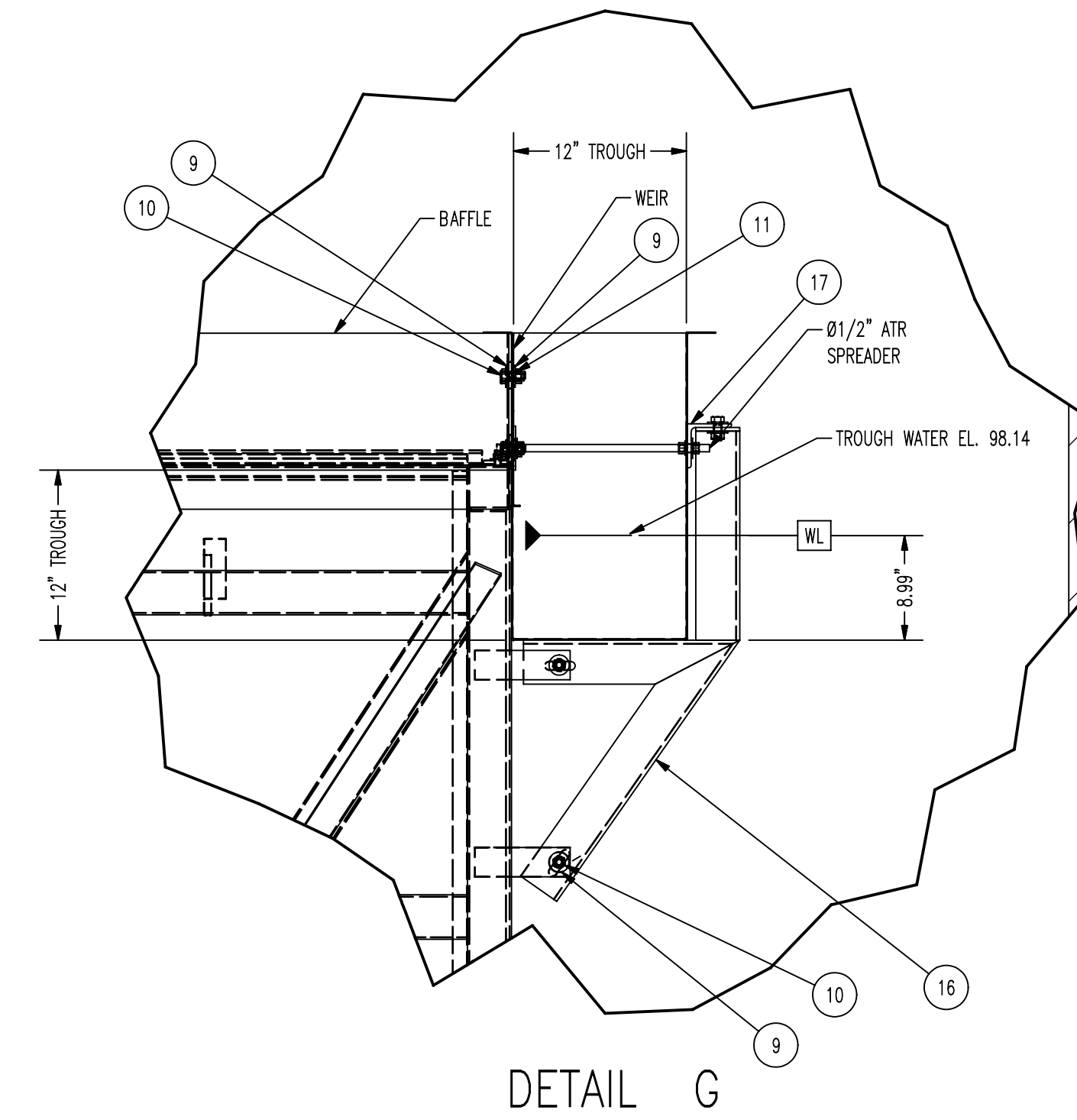
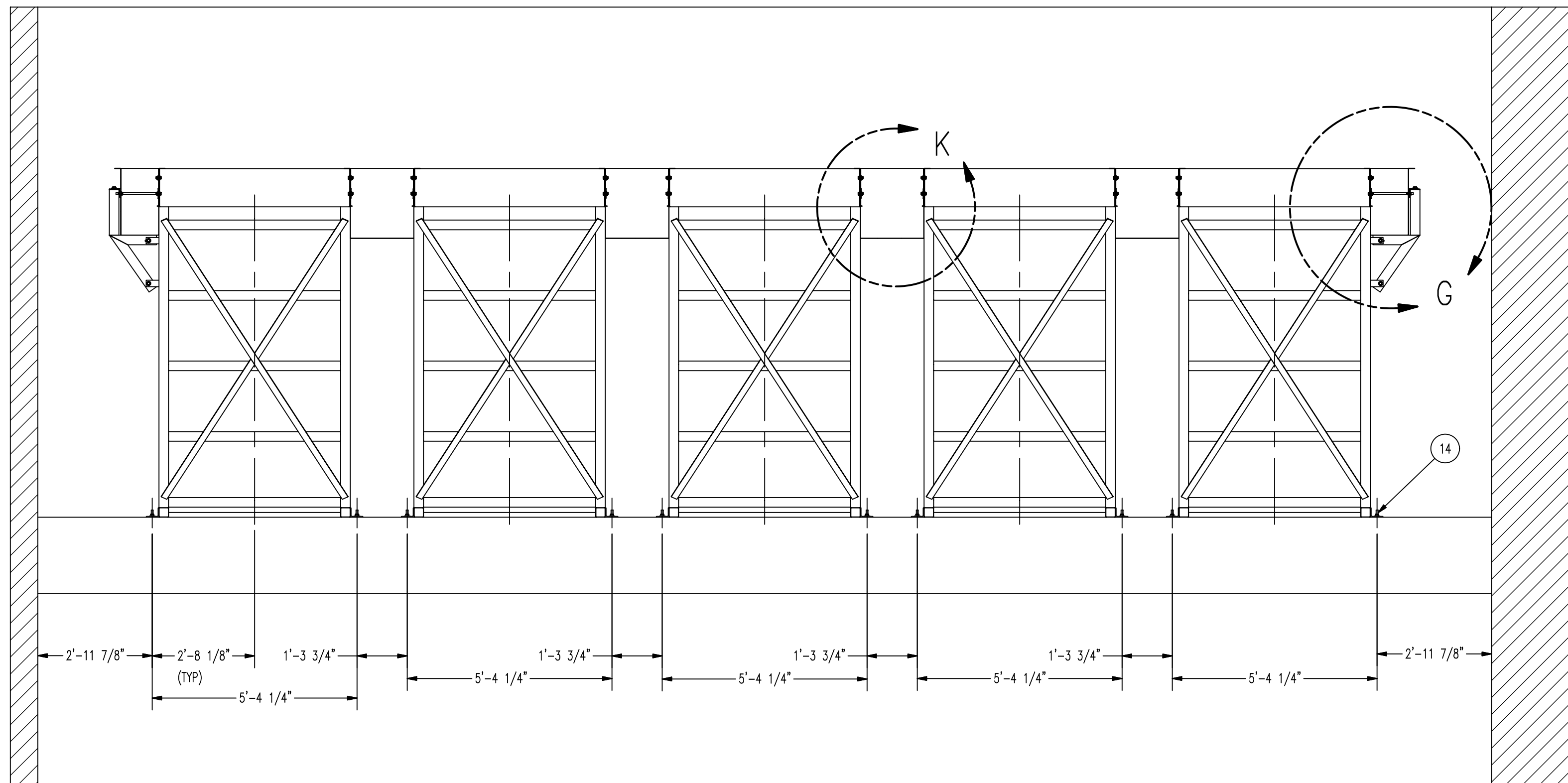
- NOTES:**
- CONCRETE SUPPORT DIMENSIONS PER CONTRACT PLANS SUBJECT TO SIZING AND VERIFICATION BY OTHERS. ELEVATIONS OF SUPPORT TO BE ACCURATE WITHIN 1/8".
 - SPARES:
8 PLATES
10 SETS OF HARDWARE PER CONNECTION TYPE
 - WATER ELEVATIONS ARE AT DESIGN FLOW OF 8 MGD.

JIM MYERS & SONS, INC.
 P.O. BOX 240038 CHARLOTTE, N.C. 28224

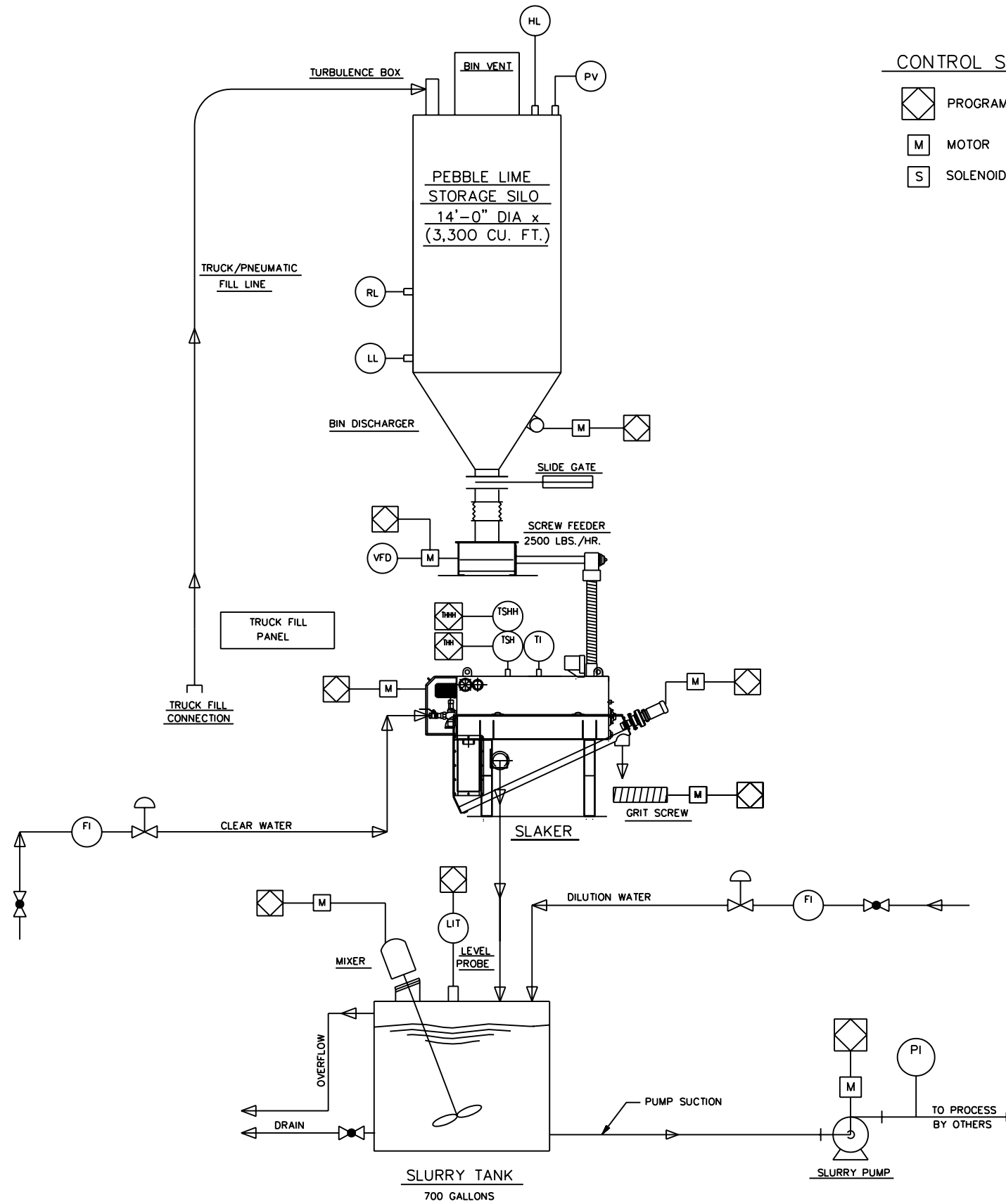
DRAWING OF PARALLEL PLATE SETTLER SYSTEM
 JOB NAME OAK CREEK WTP
 JOB LOC. OAK CREEK, WI
 CUSTOMER JF AHERN CO.
 ENGR. CH2M HILL
 DRAWN BY RA DATE 1/17/2009 CKD. BY DATE

0869-GA1 - 1



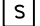
CONTR. NO. - DRAWING SHEET





JIM MYERS & SONS, INC.	
P.O. BOX 240038	CHARLOTTE, N.C. 28224
DRAWING OF PARALLEL PLATE SETTLER SYSTEM	
JOB NAME OAK CREEK WTP	
JOB LOC. OAK CREEK, WI	
CUSTOMER JF AHERN CO.	
ENGR. CH2M HILL	
DRAWN BY RA	DATE 1/17/2009 CKD. BY DATE
0869-GA1 - 2	
CONTR. NO. - DRAWING	SHEET

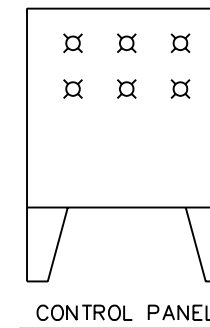


CONTROL SYSTEM SYMBOLS

-  PROGRAMMABLE LOGIC CONTROL
-  MOTOR
-  SOLENOID

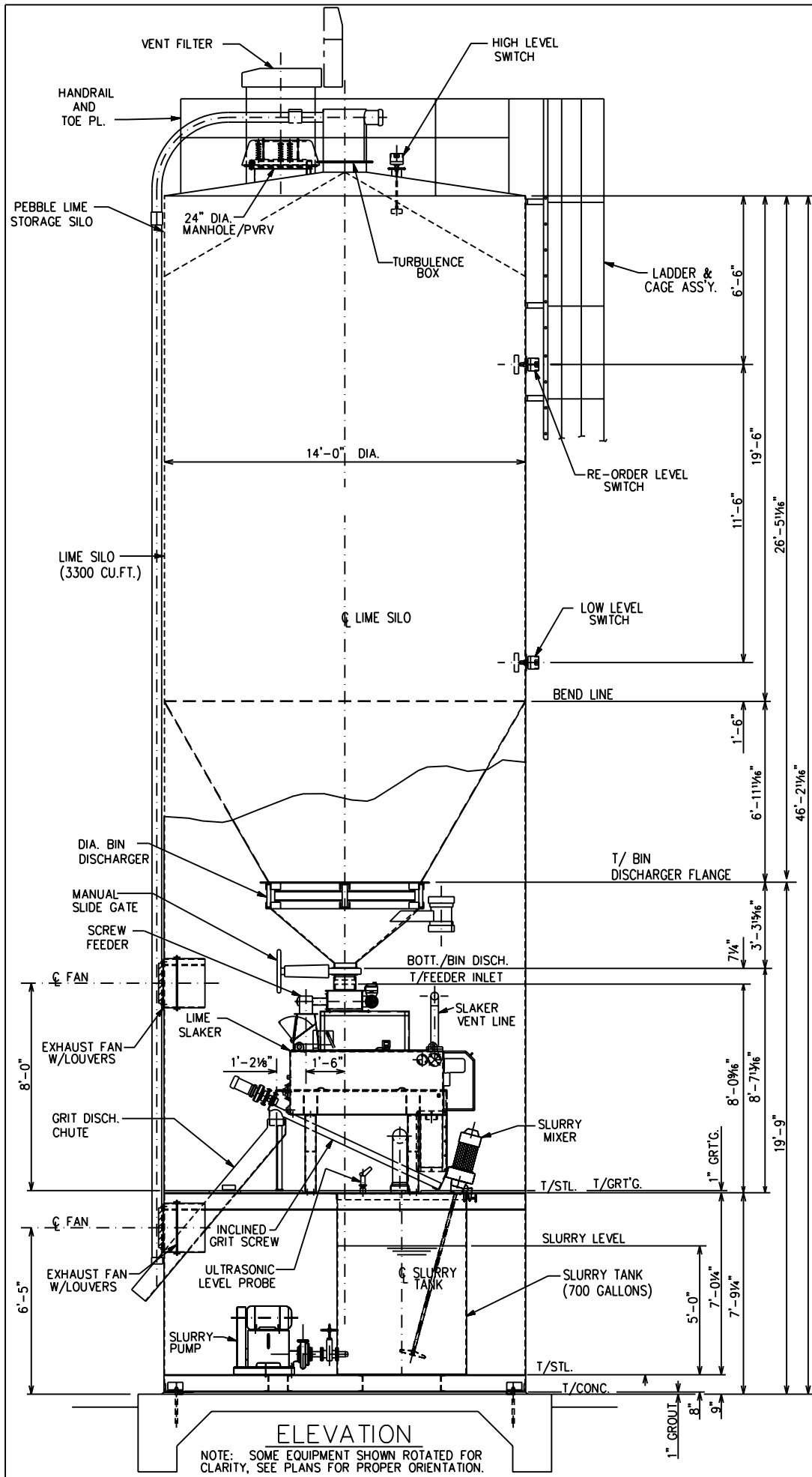
TYPICAL LINE IDENTIFICATION

-  PROCESS PIPING
-  ELECTRICAL SIGNAL

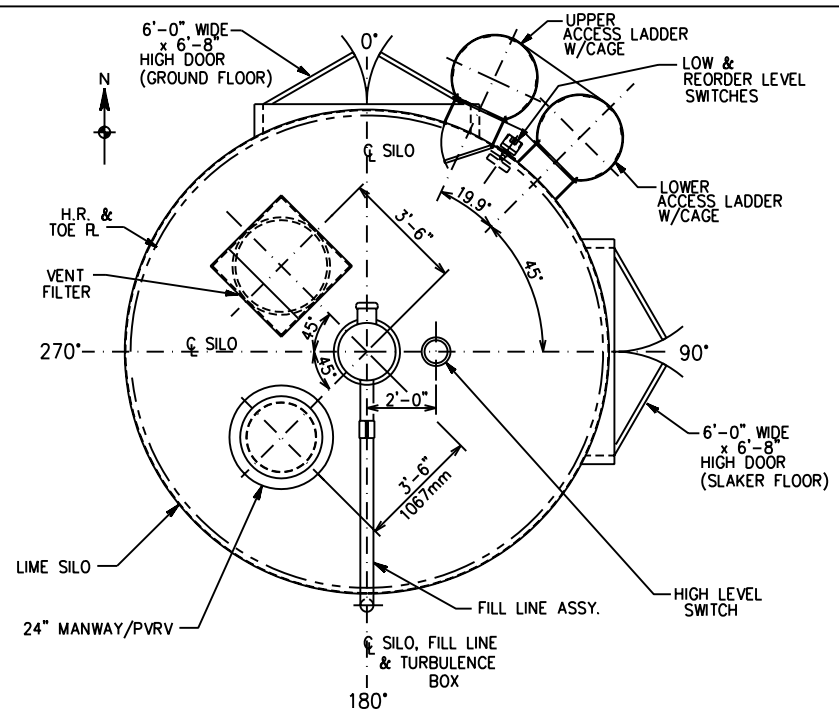


			SLOGAN ENGINEERING CO. ENGINEERS • DESIGNERS PITTSBURGH, PENNSYLVANIA		
			CDM		
			DENVER, CO.		
			LIME STORAGE, SLAKING & SLURRY SYSTEM		
			FLOW DIAGRAM		
NO.	DATE	REVISION	SCALE:	DRAWN BY:	P1109-L1
			NONE	SEC	
			DATE:	CHECKED BY:	
			11/17/09		

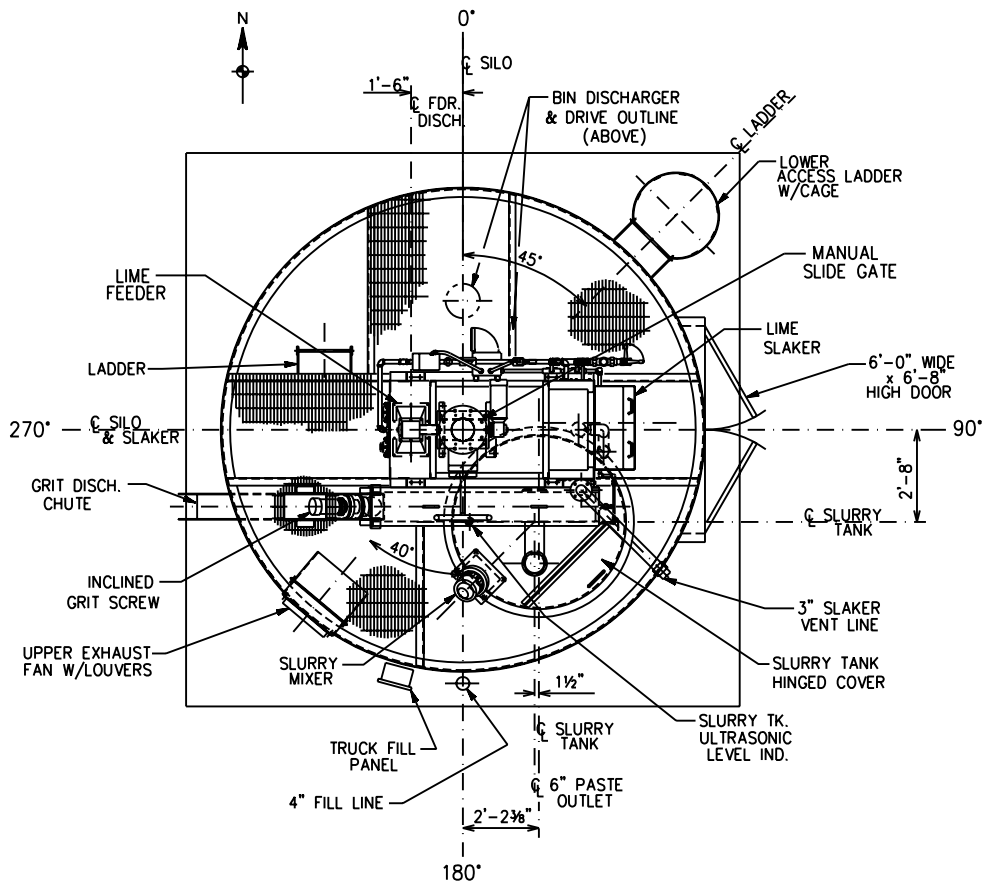
THIS DRAWING AND ALL INFORMATION THEREON IS THE PROPERTY OF SLOGAN ENGINEERING CO. AND IS CONFIDENTIAL AND MUST NOT BE MADE PUBLIC OR COPIED UNLESS AUTHORIZED BY THE OWNER AND IS SUBJECT TO RETURN UPON DEMAND



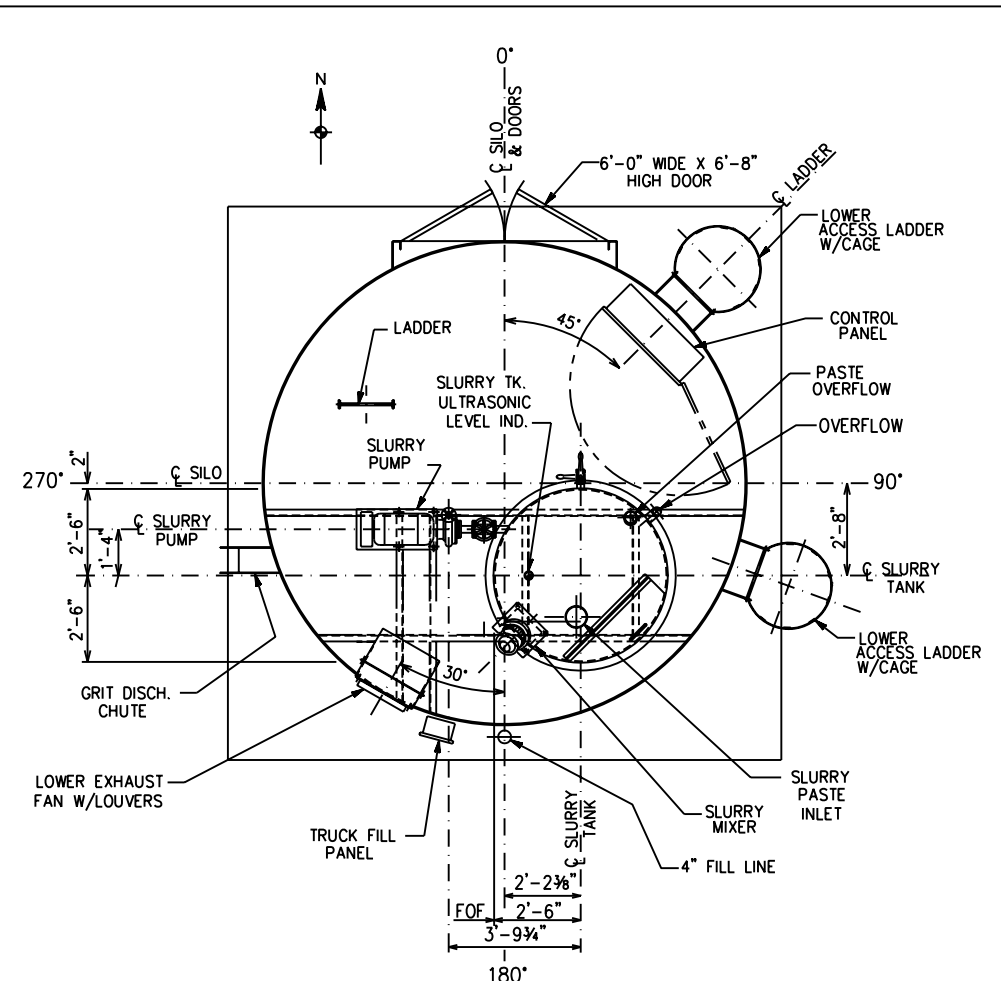
ELEVATION
NOTE: SOME EQUIPMENT SHOWN ROTATED FOR CLARITY, SEE PLANS FOR PROPER ORIENTATION.



PLAN VIEW AT T/SILO



PLAN VIEW AT SLAKER FLOOR

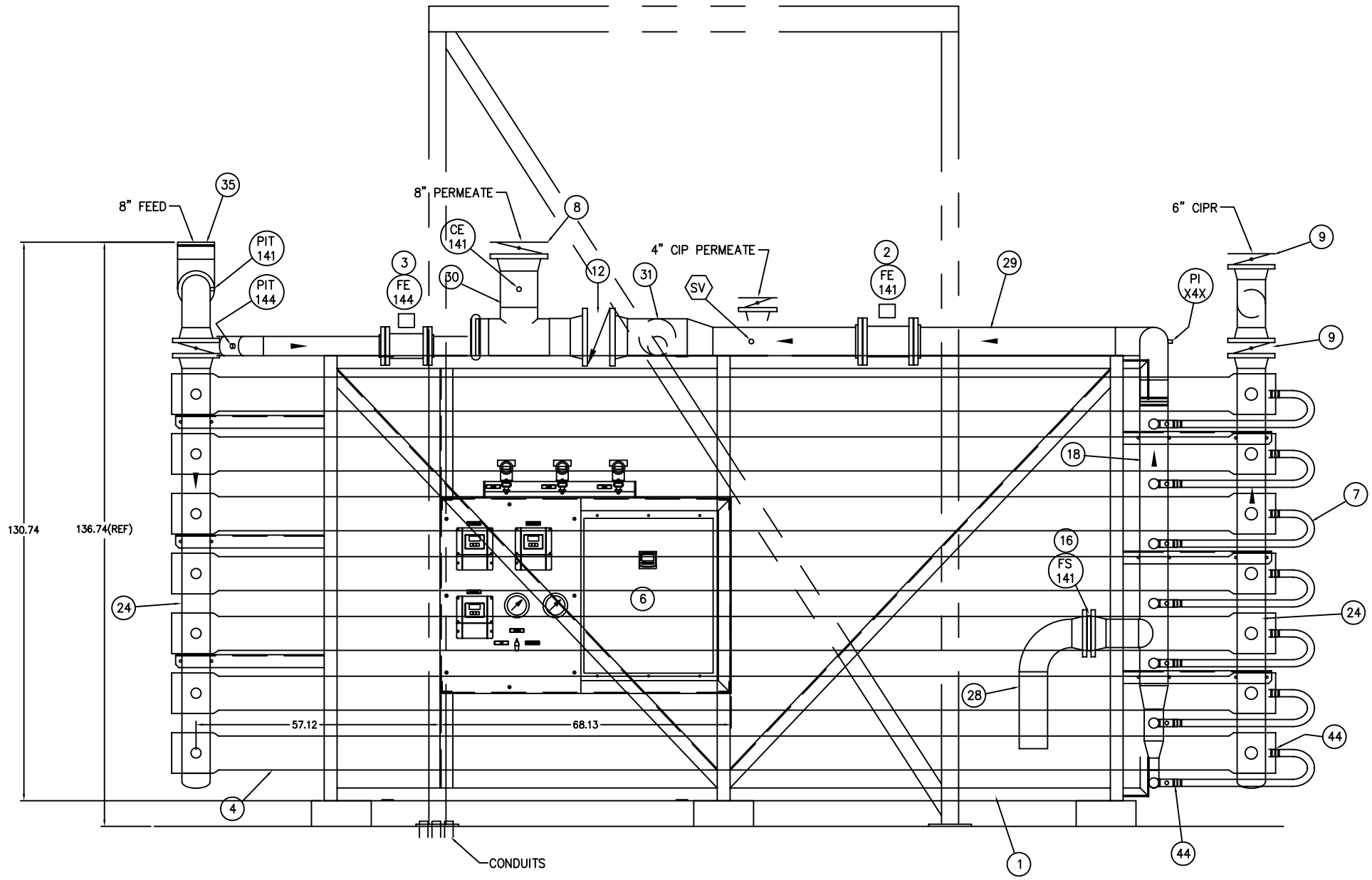


PLAN VIEW AT PUMP FLOOR

			SLOGAN ENGINEERING CO.	
			ENGINEERS • DESIGNERS PITTSBURGH, PENNSYLVANIA	
			CDM DENVER, CO.	
			LIME STORAGE, SLAKING & SLURRY SYSTEM GENERAL ARRANGEMENT - PLAN & SECTIONS	
NO.	DATE	REVISION		
			SCALE: 3/8" = 1'-0"	DRAWN BY: SEC
			DATE: 11/17/09	CHECKED BY:
			P1109-G1	

THIS DRAWING AND ALL INFORMATION THEREON IS THE PROPERTY OF SLOGAN ENGINEERING CO. AND IS CONFIDENTIAL AND MUST NOT BE MADE PUBLIC OR COPIED UNLESS AUTHORIZED BY THE OWNER AND IS SUBJECT TO RETURN UPON DEMAND.

REVISIONS		
LTR	DESCRIPTION	DATE
	SEE SHEET 1 FOR REVISION	



ELEVATION A-A

NOTE:
 THE INFORMATION, SPECIFICATIONS AND DATA SHOWN ON THIS PRINT ARE FURNISHED BY AND ARE TO REMAIN THE PROPERTY OF MEMBRANE SYSTEMS. THE ACCEPTOR WARRANTS THAT NO USE WILL BE MADE OF THE SAME EXCEPT TO FACILITATE THE INSTALLATION, MAINTENANCE AND OPERATION OF THE EQUIPMENT REPRESENTED BY SAID PRINT.



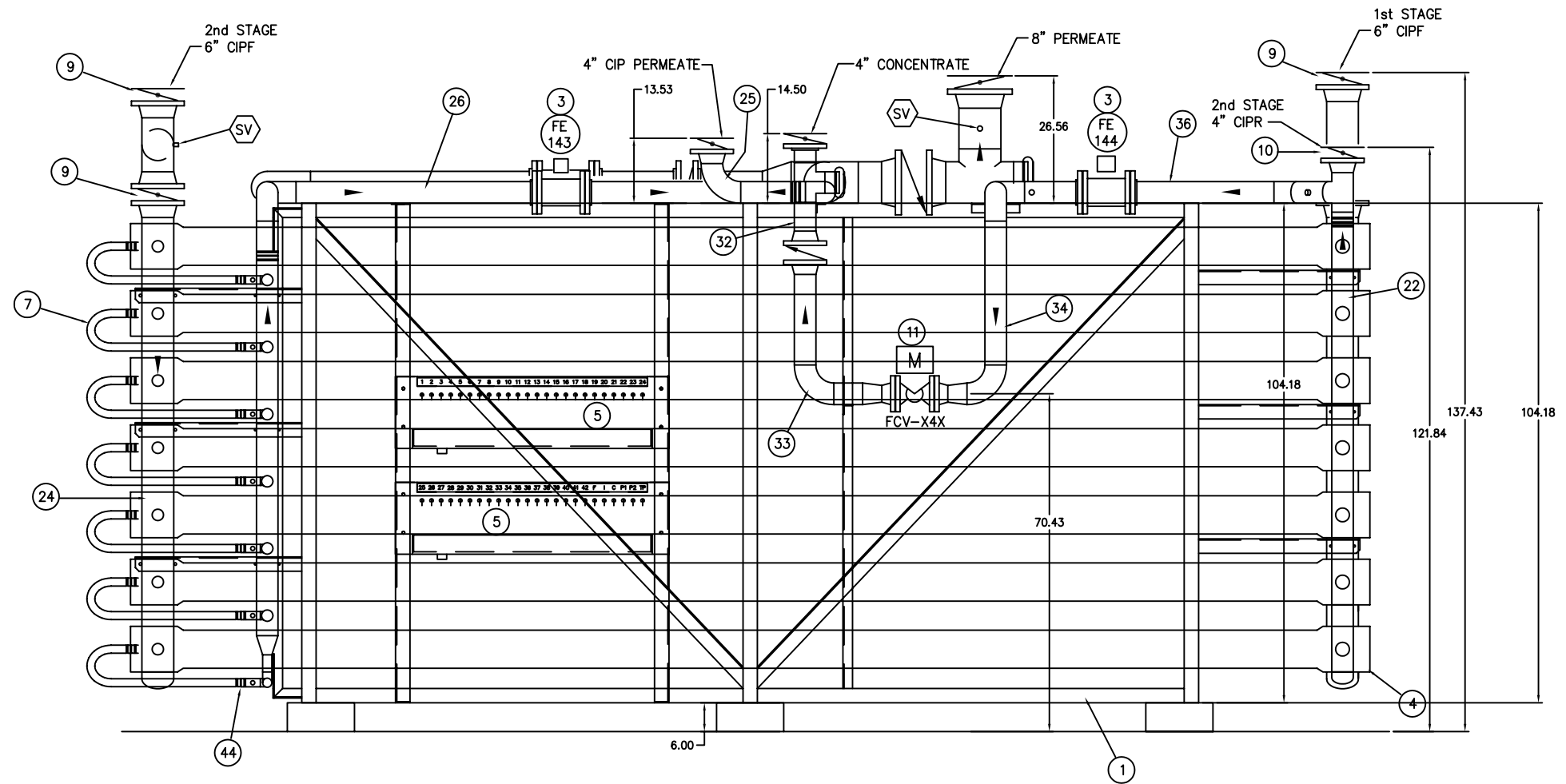
MEMBRANE SYSTEMS
 PROJECT NUMBER 07-02164
 REF DWG NO.
 DRAWN BY EJW DATE 12/12/07
 CHECKED BY DATE
 PROJ/DES ENG DATE
 ENG APPROVAL DATE

NEW HANOVER WATER TREATMENT PLANT AND MAINTENANCE FACILITY
 NEW HANOVER COUNTY,
 NORTH CAROLINA

CASTLE HAYNE TYPICAL RO TRAIN ASSEMBLY

SIZE	NHC-54-02	REV
B		0
SCALE: 3/8"=1'-0"	NHC5402-	SHEET 2 OF 5

REVISIONS		DATE
LTR	DESCRIPTION	
	SEE SHEET 1 FOR REVISION	



ELEVATION B-B

NOTE:
THE INFORMATION, SPECIFICATIONS AND DATA SHOWN ON THIS PRINT ARE FURNISHED BY AND ARE TO REMAIN THE PROPERTY OF MEMBRANE SYSTEMS. THE ACCEPTOR WARRANTS THAT NO USE WILL BE MADE OF THE SAME EXCEPT TO FACILITATE THE INSTALLATION, MAINTENANCE AND OPERATION OF THE EQUIPMENT REPRESENTED BY SAID PRINT.



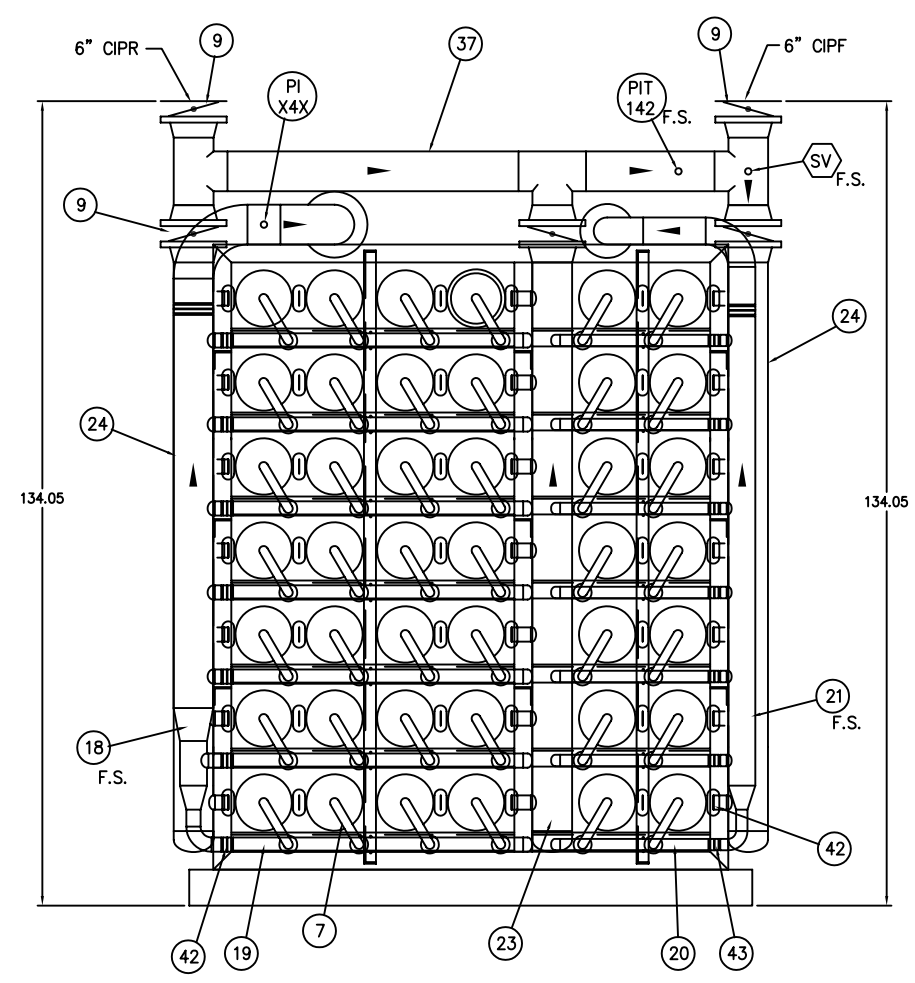
NEW HANOVER WATER TREATMENT PLANT AND MAINTENANCE FACILITY
NEW HANOVER COUNTY,
NORTH CAROLINA

MEMBRANE SYSTEMS PROJECT NUMBER	07-02164
REF DWG NO.	
DRAWN BY	EJV
DATE	12/12/07
CHECKED BY	
DATE	
PROJ/DES ENG	
DATE	
ENG APPROVAL	
DATE	

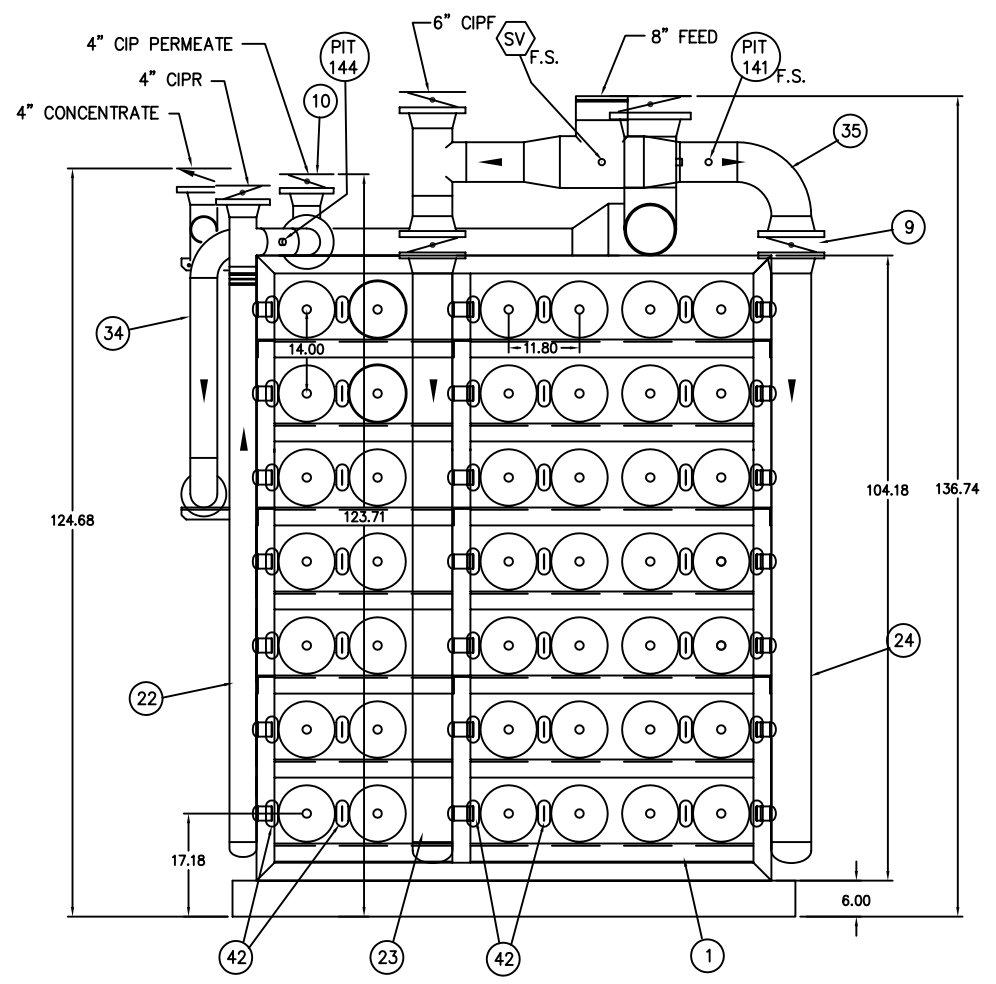
CASTLE HAYNE TYPICAL RO TRAIN ASSEMBLY

SIZE	B	REV	0
NHC-54-02			
SCALE:	3/8"=1'-0"	NHC5402-	SHEET 3 OF 5

REVISIONS		
LTR	DESCRIPTION	DATE
-	SEE SHEET 1 FOR REVISIONS	-



ELEVATION D-D



ELEVATION C-C

NOTE:
 THE INFORMATION, SPECIFICATIONS AND DATA SHOWN ON THIS PRINT ARE FURNISHED BY AND ARE TO REMAIN THE PROPERTY OF MEMBRANE SYSTEMS. THE ACCEPTOR WARRANTS THAT NO USE WILL BE MADE OF THE SAME EXCEPT TO FACILITATE THE INSTALLATION, MAINTENANCE AND OPERATION OF THE EQUIPMENT REPRESENTED BY SAID PRINT.

MEMBRANE SYSTEMS PROJECT NUMBER 07-02164
 REF DWG NO.

DRAWN BY EJV DATE 12/12/07
 CHECKED BY DATE
 PROJ/DES ENG DATE
 ENG APPROVAL DATE

MEMBRANE SYSTEMS INC.
 AN H₂O INNOVATION COMPANY

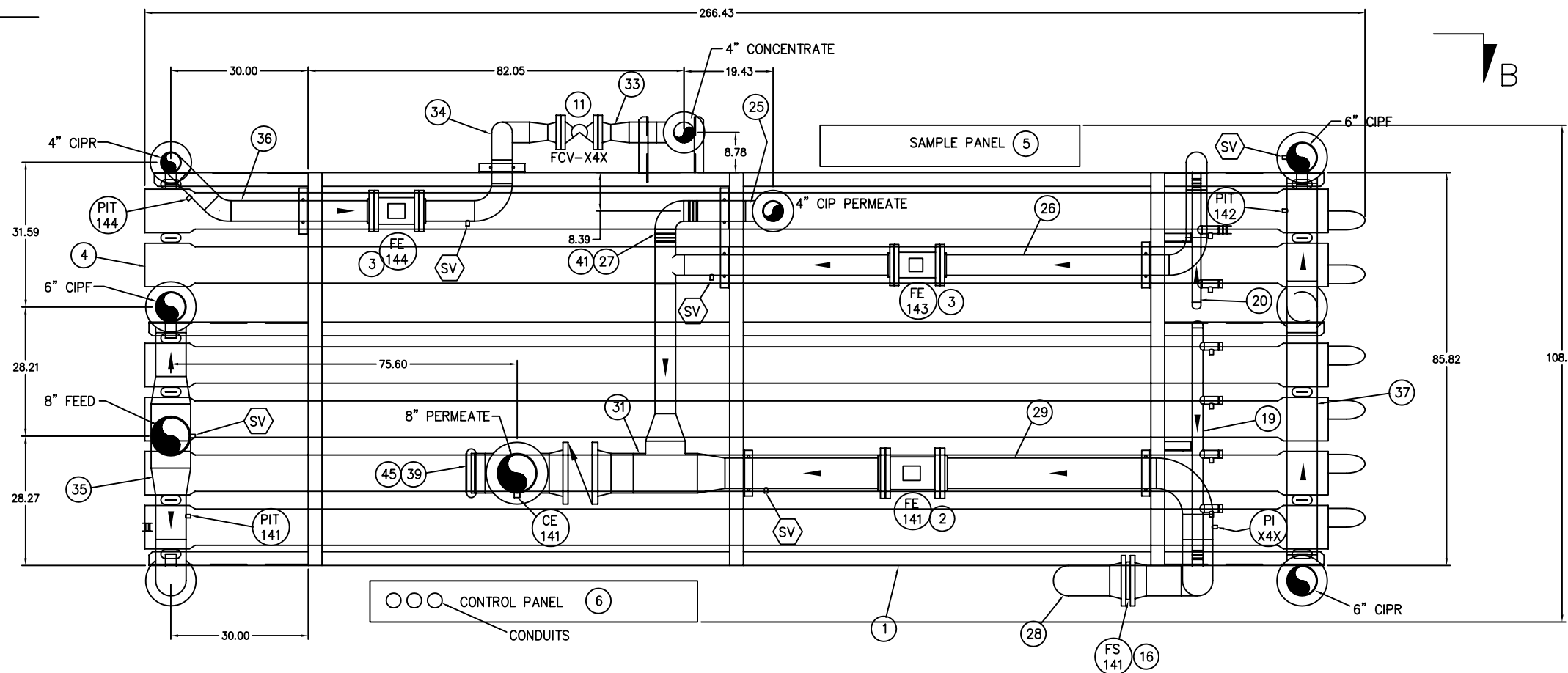
NEW HANOVER WATER TREATMENT PLANT AND MAINTENANCE FACILITY
 NEW HANOVER COUNTY,
 NORTH CAROLINA

CASTLE HAYNE TYPICAL RO TRAIN ASSEMBLY

SIZE	NHC-54-02	REV
B		0

SCALE: 3/8"=1'-0" NHC5402B SHEET 4 OF 5

REVISIONS		
LTR	DESCRIPTION	DATE
A	ADDED DIMENSIONS	3/12/08
0	ISSUED FOR CONSTRUCTION;	5/8/08



NOTE:
 THE INFORMATION, SPECIFICATIONS AND DATA SHOWN ON THIS PRINT ARE FURNISHED BY AND ARE TO REMAIN THE PROPERTY OF MEMBRANE SYSTEMS. THE ACCEPTOR WARRANTS THAT NO USE WILL BE MADE OF THE SAME EXCEPT TO FACILITATE THE INSTALLATION, MAINTENANCE AND OPERATION OF THE EQUIPMENT REPRESENTED BY SAID PRINT.

MEMBRANE SYSTEMS PROJECT NUMBER 07-02164
 REP DWG NO.

DRAWN BY EJV DATE 12/12/07
 CHECKED BY DATE
 PROJ/DES ENG DATE
 ENG APPROVAL DATE



NEW HANOVER WATER TREATMENT PLANT AND MAINTENANCE FACILITY
 NEW HANOVER COUNTY,
 NORTH CAROLINA

CASTLE HAYNE TYPICAL RO TRAIN ASSEMBLY

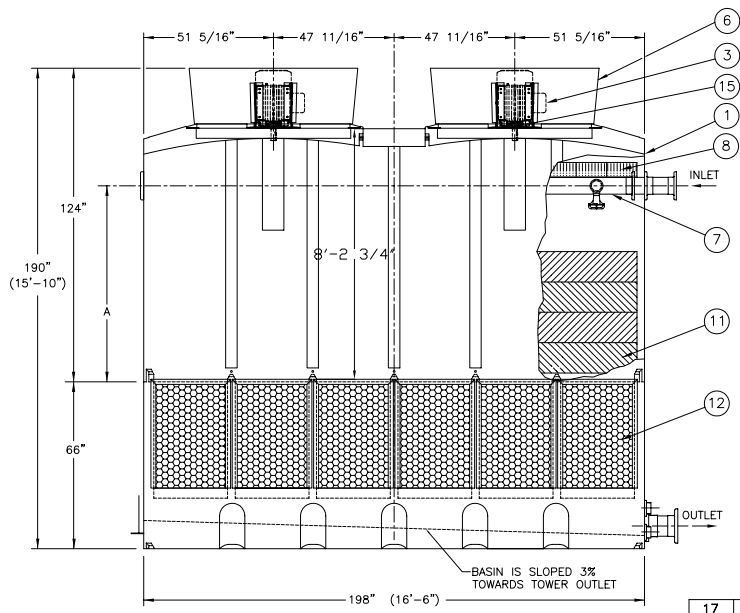
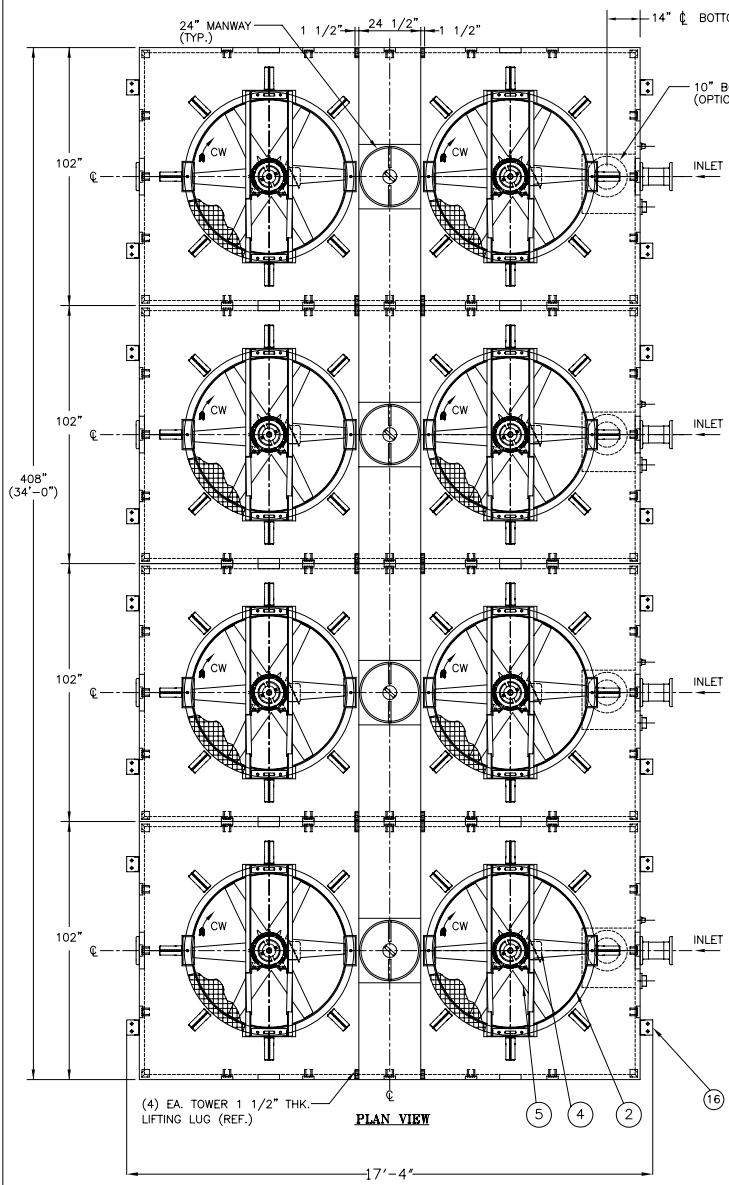
SIZE	NHC-54-02	REV
B		0

SCALE: 3/8"=1'-0" NHC5402- SHEET 1 OF 5

DATE	SYM	REVISION	AUTH	CHK
2/28/02	A	REV. INLET	BLO	JF
4/8/02	B	REV. OUTLET & POCKETS	BLO	JF
1/28/03	C	ADDED ANCHOR LUG DETAILS	GT	JF
2/4/03	D	ADDED OPTIONAL OUTLET DIMENSION	GT	JF
10/8/03	E	ADJUST WEIGHTS	GT	JF
8/29/05	F	ADD DIM., ELEVATION TABLE	KF	JF
9/19/06	G	MOD. MAKE-UP; ANCHOR BOLTS	KF	JBH
1/28/08	H	ADDED SUMP SLOPE NOTE	KF	JBH
2/27/08	I	ADDED VORTEX BREAKER	KF	JBH
9/18/08	J	REVISED BOTTOM OUTLET SQUARE	KF	JBH
4/14/09	K	REVISED HEIGHT	KF	JBH

NOTES:

- DIMENSIONS SHOWN ARE NOMINAL AND ARE SUBJECT TO FABRICATION TOLERANCES.
- EXTERNAL PIPING MUST BE INDEPENDENTLY SUPPORTED.
- PIPING AND BULKHEAD FITTING MATERIAL IS PVC.
- HARDWARE MATERIAL IS TYPE 304 STAINLESS STEEL.
- FAN ASSEMBLY SHIPPED INSTALLED ON TOWER.
- MAXIMUM INLET WATER TEMPERATURE 140°F. (CONSULT FACTORY FOR HIGHER TEMP. APPLICATIONS.)
- ALL DIMENSIONS ARE IN INCHES.
- ALL WEIGHTS ARE IN POUNDS. DRY WT. INCLUDES; FAN ASSEMBLY AND TOWER COMPLETE. OPERATING WT. INCLUDES A FULL SUMP.
- TOWER(S) TO BE INSTALLED ON I-BEAMS w/ 7" MINIMUM TOP WIDTH IN POCKETS SHOWN OR A FLAT AND RIGID SURFACE. PROPERLY SUPPORTED.
- SEE DRAWING DT-D-87-905-2 FOR SIDE VIEW.

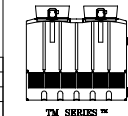


ELEVATION

MODEL SERIES	DIM "A"
TM4XX3XX	68"
TM4XX4XX	77 1/2"

17	1	VORTEX BREAKER (NOT SHOWN)	POLYETHYLENE	
16	16	ANCHOR LUGS	STEEL	DT-A-87-026
15	8	VIBRATION SWITCH	STEEL	OPTIONAL
14	2	FLOAT VALVE	BRONZE	
13	1	LADDER ASSEMBLY (NOT SHOWN)	ALUMINUM	OPTIONAL
12	44	LOUVER PANEL	POLYETHYLENE	
11	4 SETS	FILL	PVC	
10	4	STRAINER (NOT SHOWN)	PLASTIC	OPTIONAL
9	4	FILL SUPPORT	FRP	
8	4 SETS	MIST ELIMINATOR	PVC	
7	4	WATER DISTRIBUTION	PVC	
6	8	VELOCITY RECOVERY STACK	POLYETHYLENE	WITH SCREEN
5	8	PROPELLER	FRP/POLYPROP	
4	8	ELECTRICAL CONN.	ALUMINUM	
3	8	MOTOR	ALUM./STEEL	TEAO, 900 RPM
2	8	FAN RING	COATED STEEL	
1	4	TOWER SHELL	POLYETHYLENE	
ITEM	QTY	DESCRIPTION	MATERIAL	REMARKS

BILL OF MATERIALS



DELTA COOLING TOWERS, INC.
 41 PINE STREET, ROCKAWAY, NJ 07866
 PH 973.586.2201 FAX 973.586.2243

TITLE 4 CELL

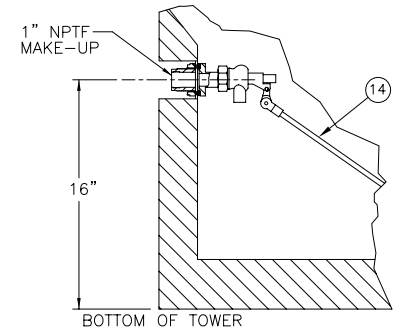
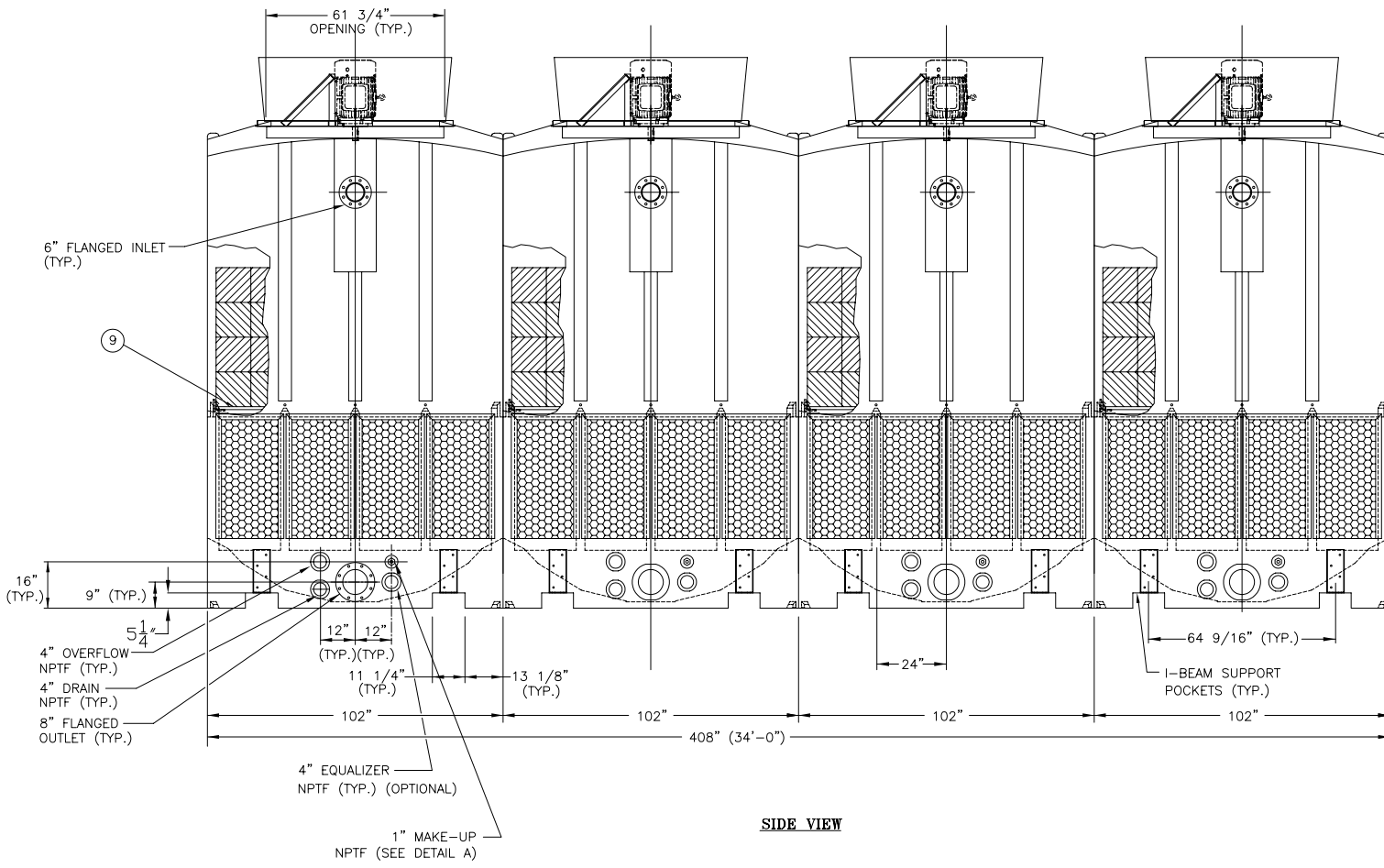
TM SERIES™ DWN BY Bonnie L. Oddo
 APPVD BY John Flaherty

SCALE 1/2"=1'-0" DWG NO. DT-D-87-905-1
 DATE 6/14/01

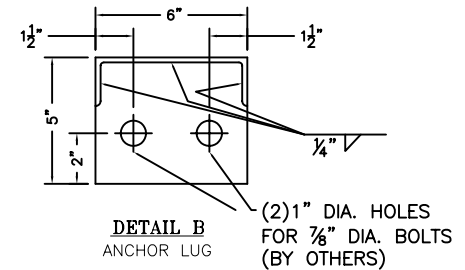
TOTAL HP	SEE MODEL
DRY WT.	26,400 LBS.
OPER. WT. SUMP FULL	49,200 LBS.
OPERATING WT. BOTTOM OUTLET	34,200 LBS.
SUMP CAP	1,920 GALLONS

INFORMATION CONTAINED HEREIN IS SUBJECT TO CHANGE WITHOUT NOTICE IN THE INTEREST OF PRODUCT IMPROVEMENT.

DATE	SYM	REVISION	AUTH	CHK
2/28/02	A	REV. INLET	BLO	JF
4/8/02	B	REV. OUTLET & POCKETS	BLO	JF
1/28/03	C	ADDED ANCHOR LUG DETAILS	GT	JF
8/29/05	D	ADD DIM., ELEVATION TABLE	KF	JF
9/19/06	E	MOD. MAKE-UP, ANCHOR BOLTS	KF	JBH
4/14/09	F	REVISED HEIGHT	KF	JBH



DETAIL A
MAKE-UP
NTS



DETAIL B
ANCHOR LUG
(2) 1" DIA. HOLES
FOR 7/8" DIA. BOLTS
(BY OTHERS)

SIDE VIEW

NOTES:

- SEE DRAWING DT-D-87-905-1 FOR PLAN VIEW & ELEVATION.

 <small>TM SERIES™</small>	DELTA COOLING TOWERS, INC.	
	<small>41 PINE STREET, ROCKAWAY, NJ 07866 PH 973.586.2201 FAX 973.586.2243</small>	
TITLE		4 CELL
TM SERIES™	DWN BY <i>Bonnie L. Oddo</i>	
	APPVD BY <i>John Flaherty</i>	
SCALE 5/8"=1'-0"	DWG NO.	DT-D-87-905-2
DATE 6/14/01		